



# QUICK AIR VALVE

Small size with great performance  
Comforming to JWWA B 137 Quick Air Valve Standard

Type MRA

Type MSA



## Main Features

### 1. Excellent intake and exhaust performance

The disc is designed to stay in the right position preventing from moving upwards by the negative pressure, thus, enabling a big amount of air exhaust in a short period of time.

### 2. Small, light and robust structure

The body is compact and light in weight with slim cylindrical design. It also helps to save installation time.

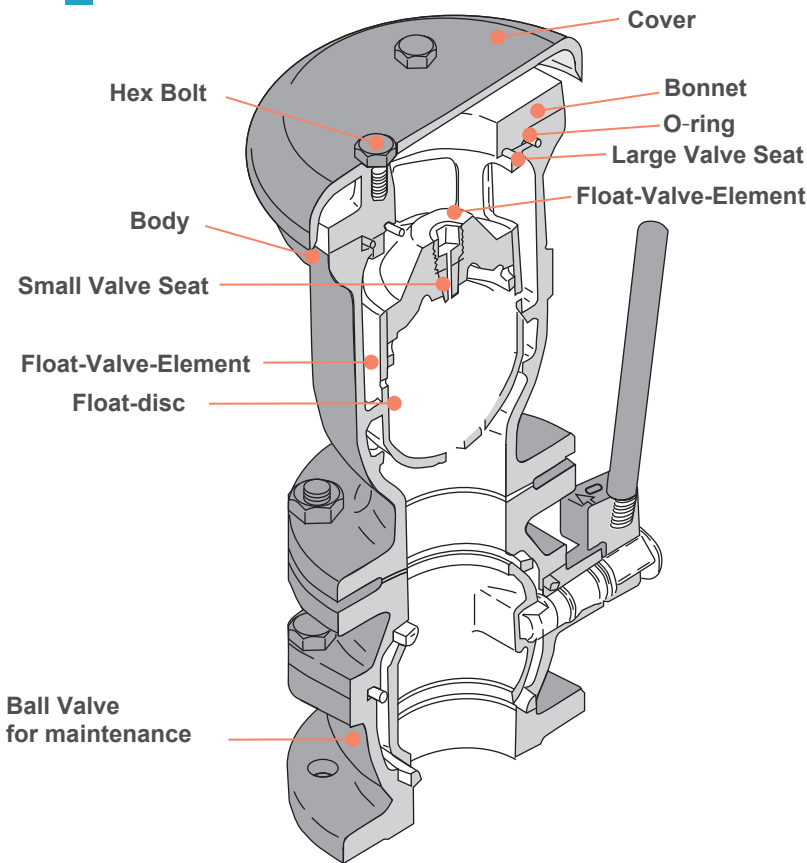
### 3. High-durability with selected material

The major parts are composed of synthetic resin for longer product life cycle.



# Structure & Standard specification

## Structure



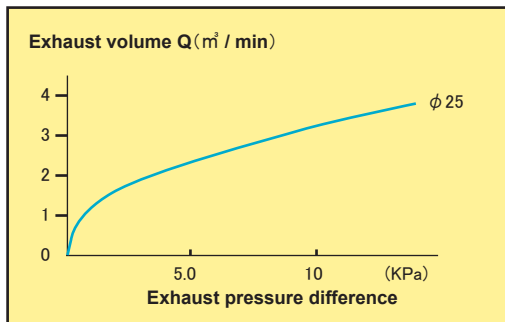
## Standard specification

Nominal Size	φ 25, 75, 100, 150, 200mm		
Media	Potable water, industrial water and river water		
Type	Type 2 (7.5K)	Type 3 (10K)	Type 4 (16K)
Operating Pressure	0.75MPa	1.0MPa	1.6MPa
Shell Test	1.75MPa	2.30MPa	2.40MPa
Seat Leakage Test	0.75MPa	1.0MPa	1.76MPa
Flange Dimensions	According to JWWA B 137		
Face-to-Face Dimension	According to JWWA B 137		
Paint	Epoxy powder coating ( Interior / Exterior )		
Color	Munsel N5.5 compatible ( Gray )		
Body	FCD450-10		
Bonnet	FCD450-10		
Cover	FCD450-10		
Float disc guide	Synthetic resin (DN25, 75, 100, 150mm) CAC406: (DN200mm)		
Float valve element	Synthetic resin		
Disc Gland	Synthetic resin		
Float disc	Ebonite (DN25, 75, 100mm) SUS316L: (DN150, 200mm)		
Small Valve Seat	SBR		
Large Valve Seat	NBR		
O-ring	NBR		
Hex bolt and nut	SUS304		
Ball valve for maintenance Body	FCD450-10		

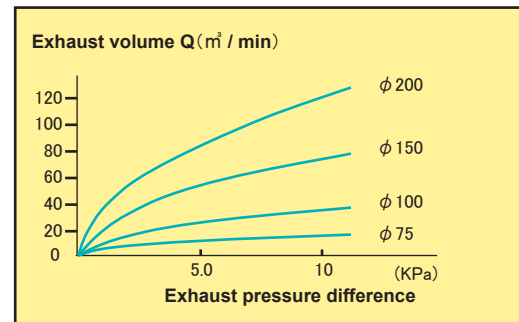
Unti freeze jacket is available as an option.  
Contact our sales personnel for detail information.

## Standard materials

Full-exhaust performance curve (DN25)



Full-exhaust performance curve (DN75-200)



Breathed air volume is assumed as 70% of the exhaust volume at the same pressure difference

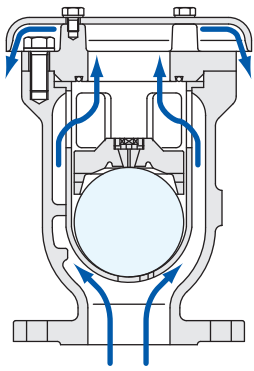
## Product Selection Reference Chart

Pipe Size	75	100	150	200	250	300	350	400	450	500	600	700	800	900	1000	1100	1200	1350	1500	1600	1650	1800	2000	2100	2200	2400	2600
QVA Nominal Size (φ)	25				75				100				150				200				200 X 2						

Unit:mm

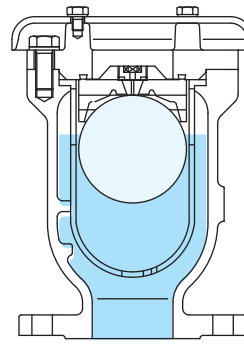
# Quick Operation

## Description of operation



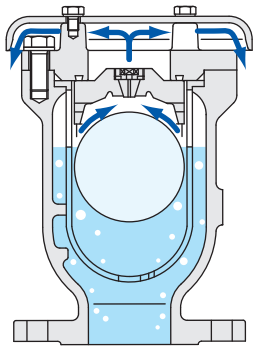
### 1 Full-Exhaust

QAV will exhaust a large amount of air from the large Valve, when filling the water in the pipeline. The float valve element and the float-disc stays at the lower position of the valve body and the Large Valve is at the full-open position.



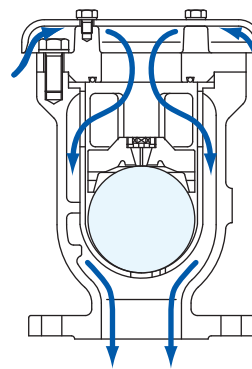
### 2 Fully Filled

When water comes into the valve body, it will flow in the inner chamber through tiny holes in valve guide cylinder. The float valve element and float-disc will go up as water level rises and finally they will close the valve, thus preventing water flowing out of the air valve.



### 3 Low-Exhaust

The air discharged from water gradually lowers the water level in the valve body by air pressure. The QAV bleeds off air through small valve disc until float-disc rises to close the valve. The QAV automatically cycles the flow to keep excessive air out of pipelines.

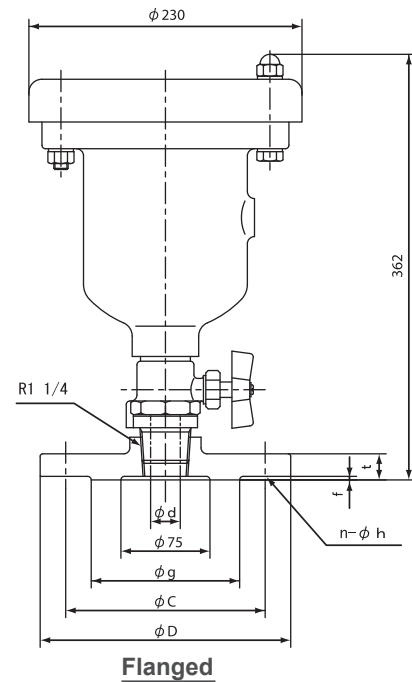
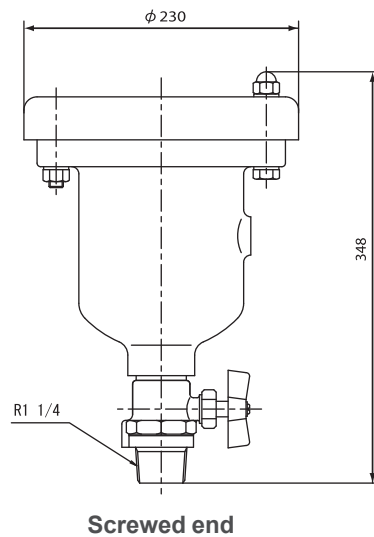
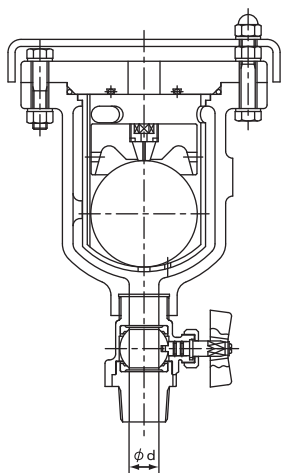


### 4 Intake

When draining water from the pipeline, the float valve element and float-valve move down in the guide cylinder and Large Valve Disc will become fully opened to breathe a big amount of air. It helps to increase drain efficiency as well as to protect pipeline being damaged by negative pressure.

## Dimensions

φ 25mm  
MRA Type



Unit:mm

Symbol Size(d)	pressure Type	g	C	D	n	h	t	f
25	2	125	168	211	4	19	22	3
	3	126	150	185	8	19	18	2
	4	132	160	200	8	23	20	2

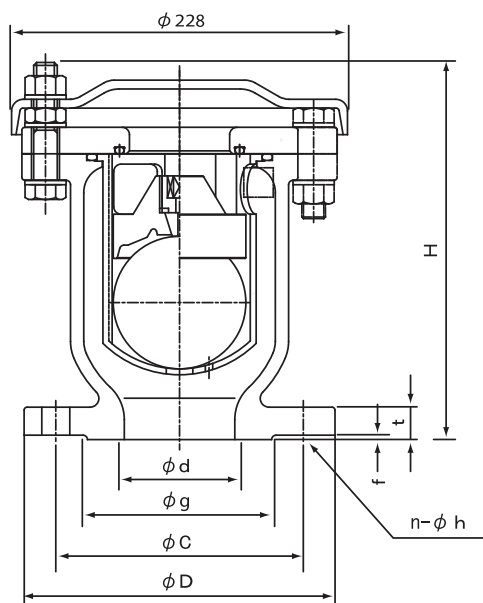
**φ 75 mm  
MSA Type  
for Superficial laying**

**Point1 Small and light**

DN75 MSA type is especially designed for superficial laying with lower height profile.

**Point2 Excels in performance**

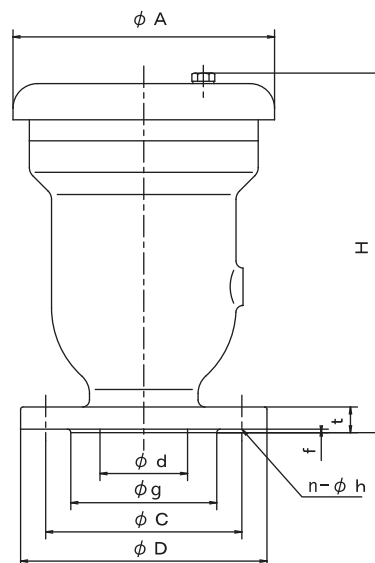
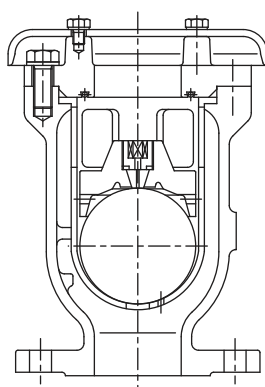
The QAV is conforming to JWWA B 137 Quick Air Valve Standard with superior breathe-in and exhaust performance.



Unit:mm

Symbol Size(d)	pressure Type	g	C	D	n	h	t	f	H
75	2	125	168	211	4	19	22	3	250
	3	126	150	185	8	19	18	2	265
	4	132	160	200	8	23	20	2	265

**φ 100 · 150 · 200mm  
MRA Type**



Unit:mm

Symbol Size(d)	pressure Type	g	C	D	n	h	t	f	A	H
100	2	152	195	238	4	19	22	3	270	347
	3	151	175	210	8	19	18	2		
	4	160	185	225	8	23	22	2		
150	2	204	247	290	6	19	23	3	352	472
	3	212	240	280	8	23	22	2		
	4	230	260	305	12	25	24	2		
200	2	256	299	342	8	19	24	3	470	565
	3	262	290	330	12	23	22	2		
	4	275	305	350	12	25	26	2		

Any information in this document is subject to change without notice.



**Maezawa Industries, Inc.**

5-11 Nakacho, Kawaguchi-city, Saitama 3328556 JAPAN

TEL: +8148-251-5511 FAX: +8148-251-9375

<http://www.maezawa.co.jp>

