

Aqua Tech



水のマイゼワ

NO. 41 e

# Check Valves

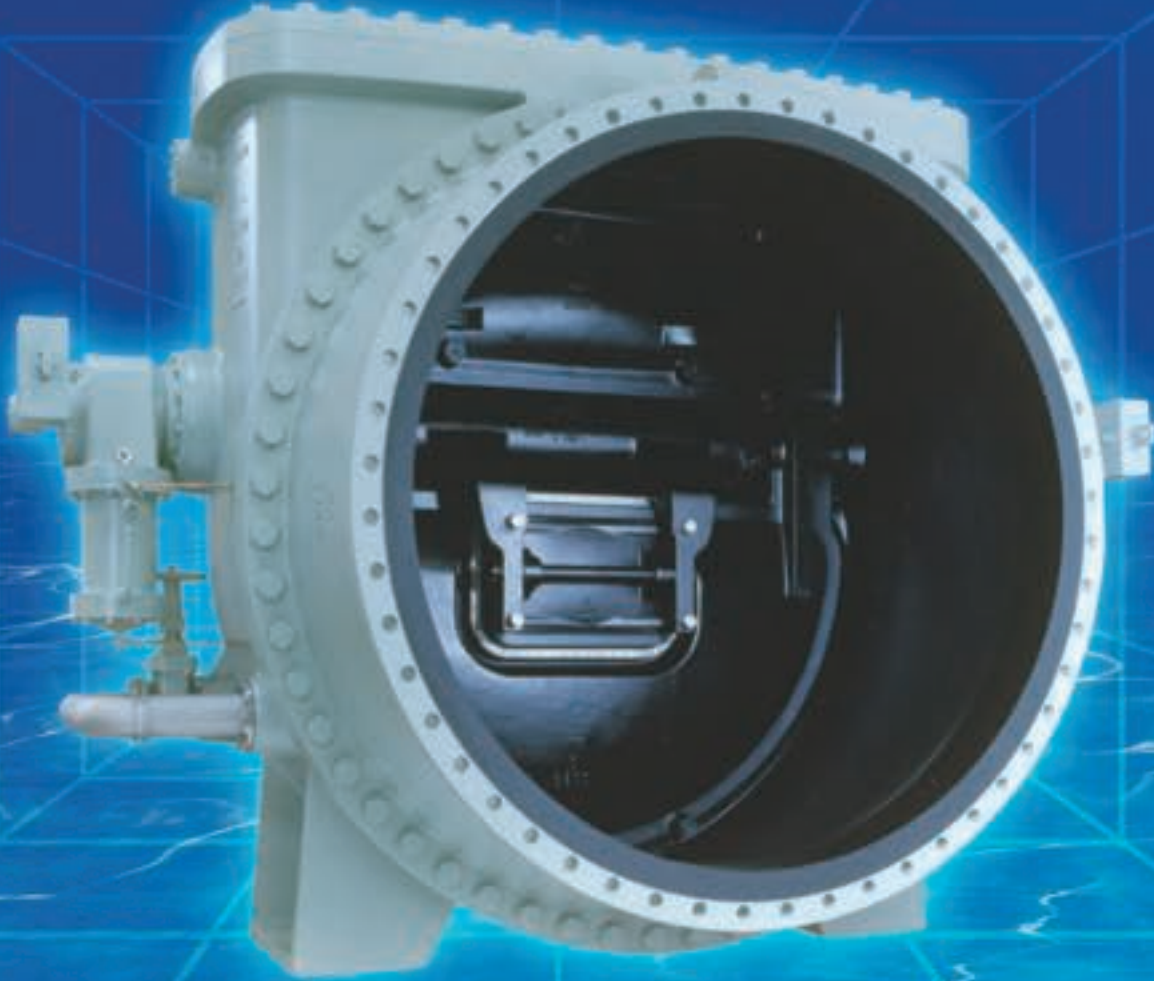
Light weight and small foot print

Type MC



*Maezawa Industries, Inc.*

# CHECK VALVES



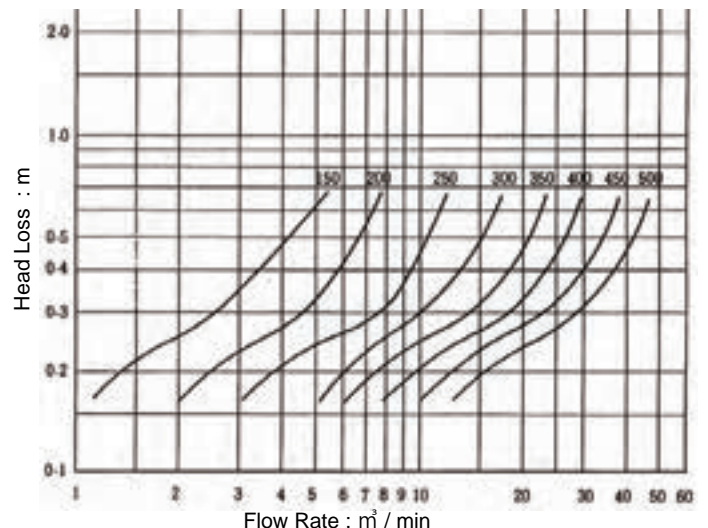
## ► Standard Specification

<b>Nominal Size</b>	75mm - 1500mm	
<b>Media</b>	Potable, Industrial water, Irrigation water, Sewerage etc.	
<b>Flange dimention</b>	Conforming to JIS G 5527	
<b>Operating Pressure</b>	Type2(0.75MPa), Type3(1.0MPa)	
<b>Face to Face Dimension</b>	Conforming to Based on Maezawa Standard	
<b>Structure</b>	Swing Type	
<b>Material</b>	<b>Body</b>	FC200 or FCD450-10
	<b>Disc</b>	FC200 or FCD450-10
<b>Options</b>	Counter Weight, Micro switch	

Contact our sales for other options and special orders

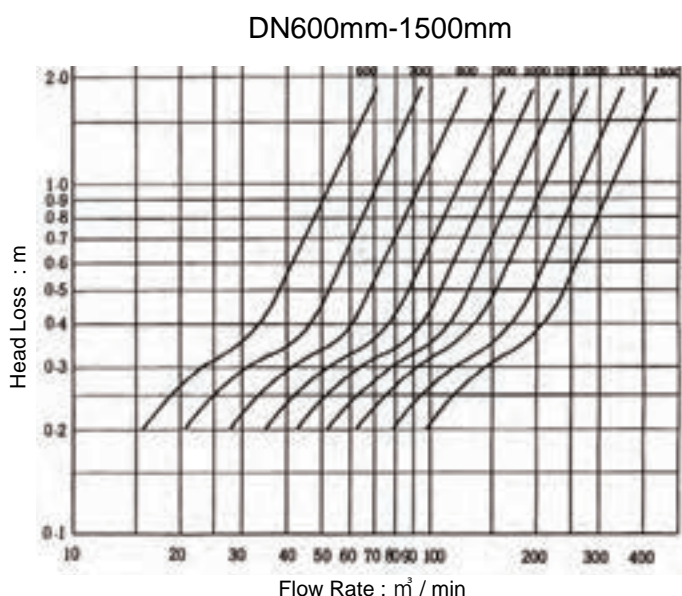
## ► Head Loss and Flow Rate

DN150mm-500mm



# ◆ Features

- 1 Light weight and smaller footprint enables easy installation
- 2 Wider range of applications with superior design for improved pressure loss characteristics
- 3 Customized disc-in-disc design for water hammer suppression to meet with actual pipeline conditions
- 4 Adjustable dashpot delay time for water hammer suppression ( between 10 to 60 seconds )
- 5 The quick closing type is available on request



## ► Type

**MC**

Swing(Standard Type)

P.4-P.6

**MC-B**

Swing with Bypass

P.7-P.9

**MC-W**

Quick closing

P.10-P.11

**MC-BW**

Quick closing with Bypass

P.12-P.13

**MC-BK**

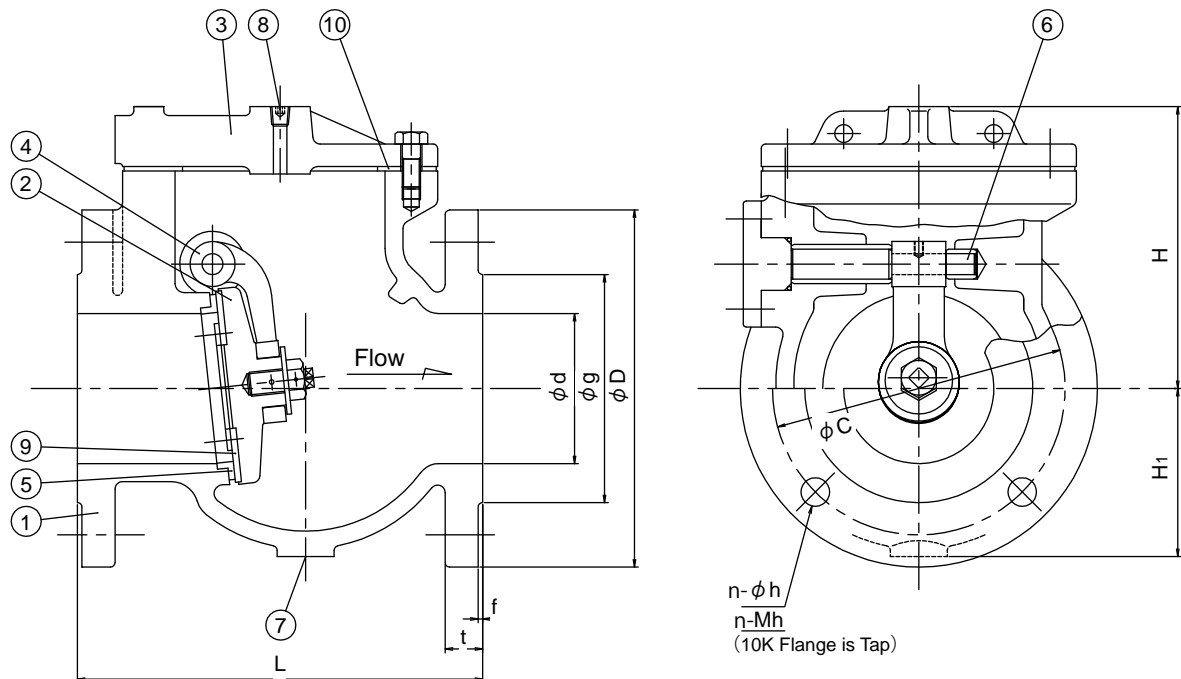
Slow closing with Dashpot

P.14-P.15

# MC

## Swing (Standard Type)

φ 75 mm ~ φ150 mm



### Material of major parts

No.	Part Name	Material	No.	Part Name	Material	No.	Part Name	Material
1	Body	FC200 / FCD450-10	5	Seat on Body	SUS304	9	Seat on disc	Synthetic rubber / SUS304
2	Disc	FC200 / FCD450-10	6	Arm Shaft	SUS304	10	Gasket	Synthetic rubber
3	Bonnet	FC200 / FCD450-10	7	Sunk Head Plug	SUS304			
4	Arm	FC200 / FCD450-10	8	Sunk Head Plug	SUS304			

No.7 is optional

### Dimensions

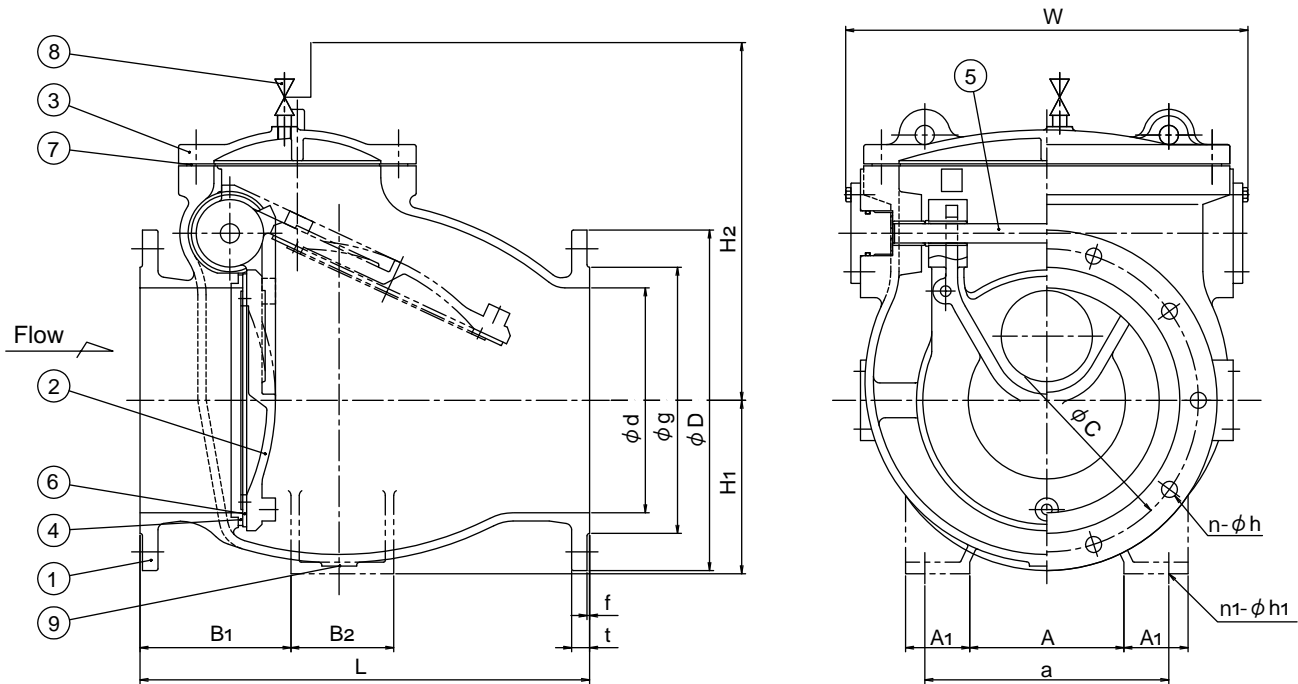
Unit :mm

Symbol Size(d)		g	C	D	t	f	n	h	L	H1	H
75	Type2	125	168	211	24	3	4	19	250	98	173
	Type3		150	185			8	M16			
100	Type2	152	195	238	25	3	4	19	270	112	188
	Type3		175	210			8	M16			
125	Type2	177	220	263	25	3	6	19	330	139	218
	Type3		210	250			8	M20			
150	Type2	204	247	290	26	3	6	19	370	160	243
	Type3		240	280			8	M20			

# MC

## Swing (Standard Type)

φ200mm~ φ500mm



\* No installation mount is attached for 500mm and smaller model as default

### Material of major parts

No.	Part Name	Material	No.	Part Name	Material	No.	Part Name	Material
1	Body	FC200 / FCD450-10	4	Seat on Body	CAC406 / SUS304	7	Gasket	Synthetic rubber
2	Disc	FC200 / FCD450-10	5	Arm Shaft	SUS403 / SUS304	8	Ball Valve	C3771
3	Bonnet	FC200 / FCD450-10	6	Seat on disc	Synthetic rubber	9	Drain Plug	SUS304

No.9 is optional

### Dimensions

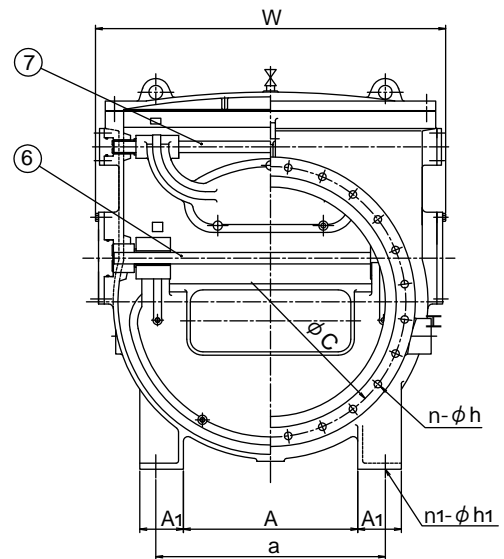
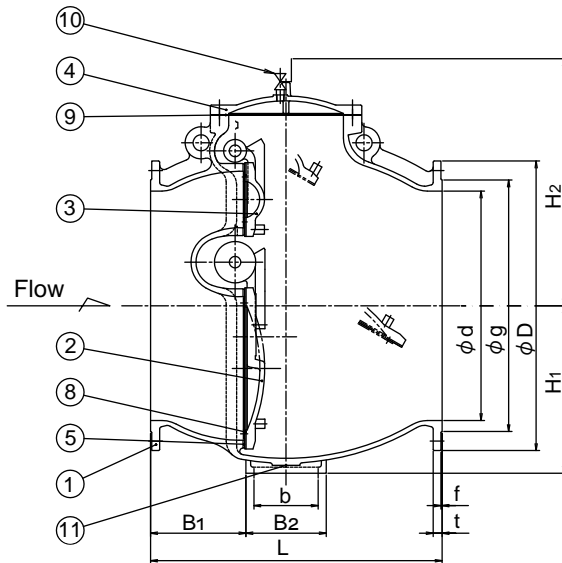
Unit :mm

Symbol Size(d)		g	C	D	t	f	n	h	L	H1	app. H2	app. W	B1	B2	A	A1	a	n1	d1
200	Type2	256	299	342	24	3	8	19	470	180	404	400	150	140	140	50	200	2	M16
	Type3	262	290	330	24	2	12	23											
250	Type2	308	360	410	25	3	8	23	540	210	443	470	175	150	180	70	260	2	M16
	Type3	324	355	400	25	2	12	25											
300	Type2	362	414	464	27	3	10	23	620	240	504	566	200	150	240	70	320	2	M16
	Type3	368	400	445	27	3	16	25											
350	Type2	414	472	530	28	3	10	25	700	270	557	626	235	160	240	100	380	2	M16
	Type3	413	445	490	28	3	16	25											
400	Type2	466	524	582	29	3	12	25	760	300	594	696	265	160	290	100	430	2	M16
	Type3	475	510	560	29	3	16	27											
450	Type2	518	585	652	30	3	12	27	820	340	649	776	275	200	300	120	480	2	M16
	Type3	530	565	620	30	3	20	27											
500	Type2	572	639	706	31	4	12	27	900	380	708	846	310	200	360	120	540	2	M16
	Type3	585	620	675	31	3	20	27											

# MC

## Swing (Standard Type)

φ600mm~φ1500mm



### Material of major parts

No.	Part Name	Material	No.	Part Name	Material	No.	Part Name	Material
1	Body	FC200 / FCD450-10	5	Seat on Body	CAC406 / SUS304	9	Gasket	Synthetic rubber
2	Disc(Down)	FC200 / FCD450-10	6	Arm Shaft (Down)	SUS403 / SUS304	10	Ball Valve	C3771
3	Disc (Up)	FC200 / FCD450-10	7	Arm Shaft (Up)	SUS403 / SUS304	11	Drain Plug	SUS304
4	Bonnet	FC200 / FCD450-10	8	Rubber Seal	Synthetic rubber			

No.11 is optional

### Dimensions

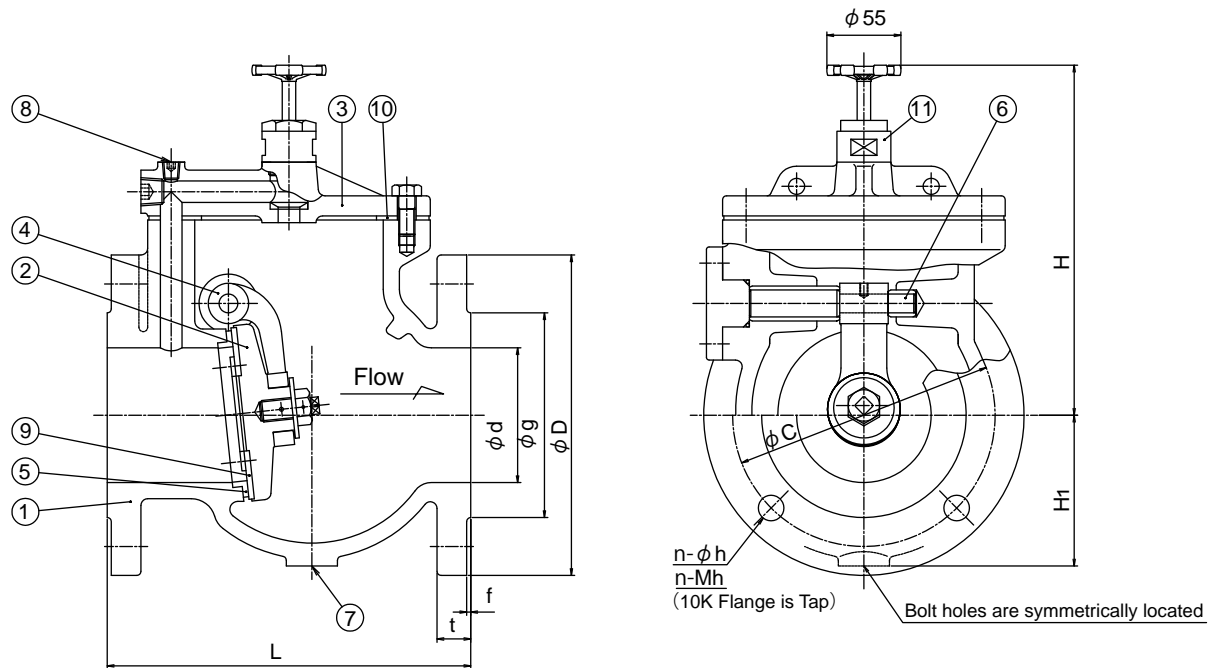
Unit :mm

Symbol Size(d)		g	C	D	t	f	n	h	L	H1	app. H2	app. W	B1	B2	b	A	A1	a	n1	d1
600	Type2	676	743	810	32	4	16	27	810	480	757	1002	275	250	-	420	150	600	2	M20
	Type3	690	730	795	32	3	24	33												
700	Type2	780	854	928	33	4	16	33	880	530	807	1132	295	250	-	520	150	700	2	M20
	Type3	800	840	905	34	3	24	33												
800	Type2	886	960	1034	36	5	20	33	1020	600	892	1298	350	300	-	560	180	800	2	M20
	Type3	905	950	1020	36	3	28	33												
900	Type2	990	1073	1156	38	5	20	33	1160	650	989	1408	385	350	-	640	190	900	2	M24
	Type3	1005	1050	1120	38	3	28	33												
1000	Type2	1096	1179	1262	39	5	24	33	1270	730	1077	1526	415	350	-	760	190	1000	2	M24
	Type3	1110	1160	1235	40	3	28	39												
1100	Type2	1200	1283	1366	41	5	24	33	1400	800	1133	1626	450	420	280	780	230	1100	4	M24
	Type3	1220	1270	1345	42	3	28	39												
1200	Type2	1304	1387	1470	43	5	28	33	1500	880	1223	1766	500	420	280	880	230	1200	4	M24
	Type3	1325	1380	1465	44	3	32	39												
1350	Type2	1462	1552	1642	46	6	28	39	1600	950	1343	1956	500	500	340	910	300	1350	4	M30
	Type3	1480	1540	1630	48	3	36	46												
1500	Type2	1620	1710	1800	48	6	32	39	1750	1050	1439	2146	550	500	340	1060	300	1500	4	M30
	Type3	1635	1700	1795	50	3	40	46												

# MC-B

Swing  
with Bypass

φ75mm~ φ150mm



## Material of major parts

No.	Part Name	Material	No.	Part Name	Material	No.	Part Name	Material
1	Body	FC200 / FCD450-10	5	Seat on Body	SUS304	9	Seat on disc	Synthetic rubber / SUS304
2	Disc	FC200 / FCD450-10	6	Arm Shaft	SUS304	10	Gasket	Synthetic rubber
3	Bonnet	FC200 / FCD450-10	7	Sunk Head Plug	SUS304	11	Bypass valve	SUS
4	Arm	FC200 / FCD450-10	8	Sunk Head Plug	SUS304			

No.7 is optional

## Dimensions

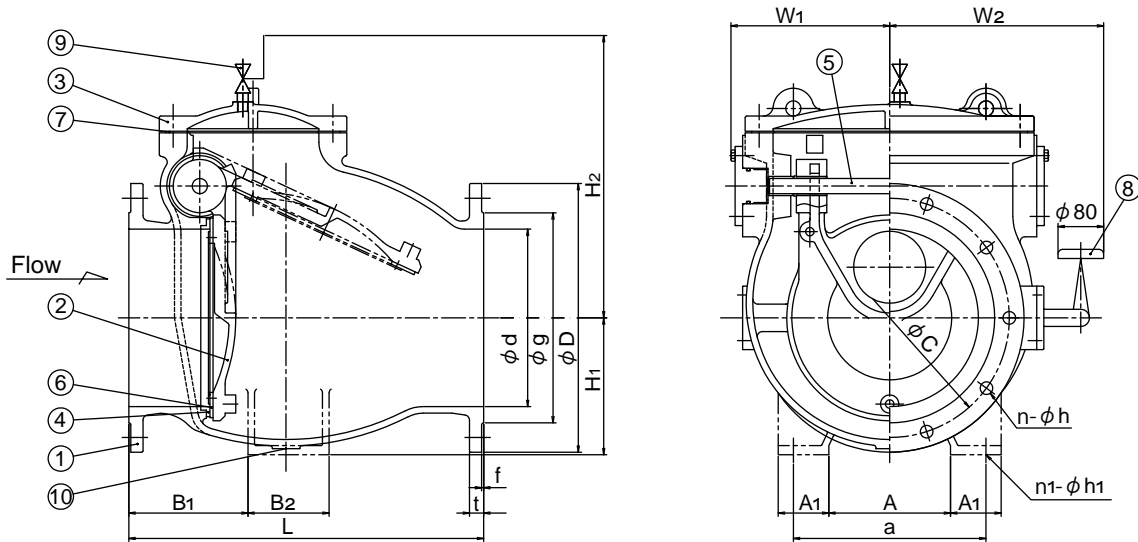
Unit :mm

Symbol Size(d)		g	C	D	t	f	n	h	L	H1	H
75	Type2	125	168	211	24	3	4	19	250	98	245
	Type3		150	185			8	M16			
100	Type2	152	195	238	25	3	4	19	270	112	260
	Type3		175	210			8	M16			
125	Type2	177	220	263	25	3	6	19	330	139	290
	Type3		210	250			8	M20			
150	Type2	204	247	290	26	3	6	19	370	160	315
	Type3		240	280			8	M20			

# MC-B

Swing  
with Bypass

φ200mm~φ500mm



\* No installation mount is attached for 500mm and smaller model as default

## Material of major parts

No.	Part Name	Material	No.	Part Name	Material	No.	Part Name	Material
1	Body	FC200 / FCD450-10	5	Arm Shaft	SUS403 / SUS304	9	Ball Valve	C3771
2	Disc	FC200 / FCD450-10	6	Seat on disc	Synthetic rubber	10	Drain Plug	SUS304
3	Bonnet	FC200 / FCD450-10	7	Gasket	Synthetic rubber			
4	Seat on Body	CAC406 / SUS304	8	Stop Valve	SCS			

No.10 is optional

## Dimensions

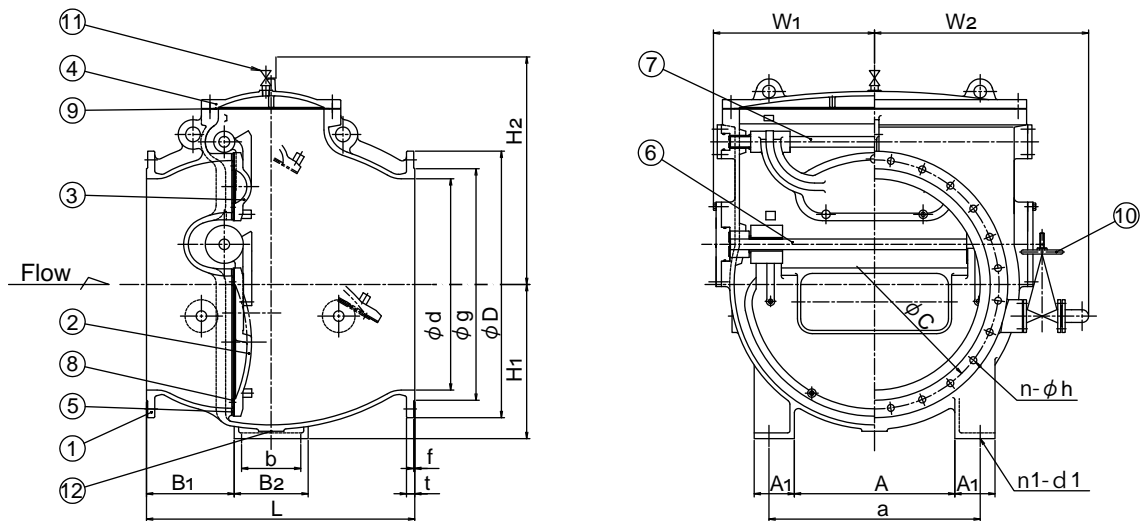
Unit :mm

Symbol Size(d)		g	C	D	t	f	n	h	L	H1	app. H2	app. W1	app. W2	B1	B2	A	A1	a	n1	d1
200	Type2	256	299	342	24	3	8	19	470	180	404	200	270	150	140	140	50	200	2	M16
	Type3	262	290	330	24	2	12	23												
250	Type2	308	360	410	25	3	8	23	540	210	443	235	330	175	150	180	70	260	2	M16
	Type3	324	355	400	25	2	12	25												
300	Type2	362	414	464	27	3	10	23	620	240	504	283	374	200	150	240	70	320	2	M16
	Type3	368	400	445	27	3	16	25												
350	Type2	414	472	530	28	3	10	25	700	270	557	313	422	235	160	240	100	380	2	M16
	Type3	413	445	490	28	3	16	25												
400	Type2	466	524	582	29	3	12	25	760	300	594	348	457	265	160	290	100	430	2	M16
	Type3	475	510	560	29	3	16	27												
450	Type2	518	585	652	30	3	12	27	820	340	649	388	515	275	200	300	120	480	2	M16
	Type3	530	565	620	30	3	20	27												
500	Type2	572	639	706	31	4	12	27	900	380	708	423	545	310	200	360	120	540	2	M16
	Type3	585	620	675	31	3	20	27												

# MC-B

Swing  
with Bypass

φ600mm~ φ1500mm



## Material of major parts

No.	Part Name	Material	No.	Part Name	Material	No.	Part Name	Material
1	Body	FC200 / FCD450-10	5	Seat on Body	CAC406 / SUS304	9	Gasket	Synthetic rubber
2	Disc(lower)	FC200 / FCD450-10	6	Disc(lower)	SUS403 / SUS304	10	Gate Valve	FC or SCS
3	Disc (upper)	FC200 / FCD450-10	7	Arm Shaft (upper)	SUS403 / SUS304	11	Ball Valve	C3771
4	Bonnet	FC200 / FCD450-10	8	Rubber Seal	Synthetic rubber	12	Drain Plug	SUS304

No.12 is optional

## Dimensions

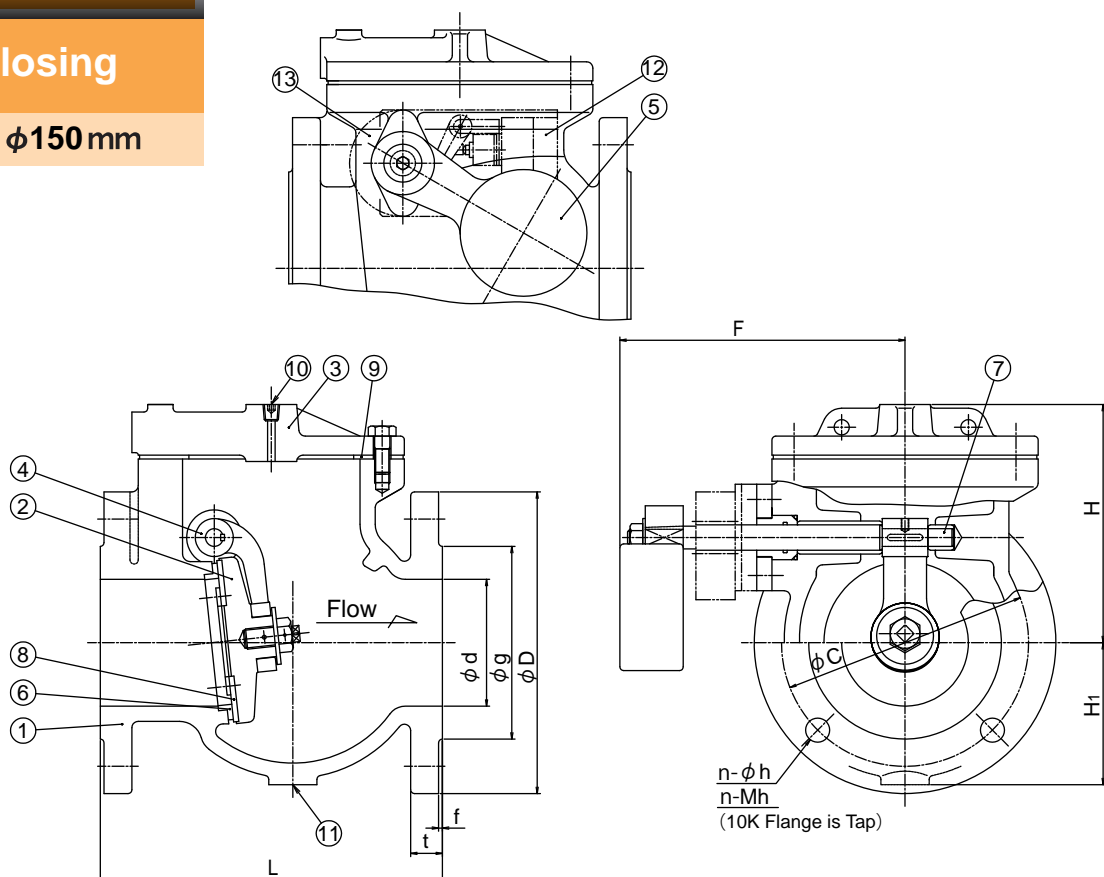
Unit :mm

Symbol Size(d)		g	C	D	t	f	n	h	L	H1	app. H2	app. W1	app. W2	B1	B2	b	A	A1	a	n1	d1
600	Type2	676	743	810	32	4	16	27	810	480	757	501	738	275	250	-	420	150	600	2	M20
	Type3	690	730	795	32	3	24	33													
700	Type2	780	854	928	33	4	16	33	880	530	807	566	803	295	250	-	520	150	700	2	M20
	Type3	800	840	905	34	3	24	33													
800	Type2	886	960	1034	36	5	20	33	1020	600	892	649	929	350	300	-	560	180	800	2	M20
	Type3	905	950	1020	36	3	28	33													
900	Type2	990	1073	1156	38	5	20	33	1160	650	989	704	984	385	350	-	640	190	900	2	M24
	Type3	1005	1050	1120	38	3	28	33													
1000	Type2	1096	1179	1262	39	5	24	33	1270	730	1077	763	1014	415	350	-	760	190	1000	2	M24
	Type3	1110	1160	1235	40	3	28	39													
1100	Type2	1200	1283	1366	41	5	24	33	1400	800	1133	813	1143	450	420	280	780	230	1100	4	M24
	Type3	1220	1270	1345	42	3	28	39													
1200	Type2	1304	1387	1470	43	5	28	33	1500	880	1223	883	1213	500	420	280	880	230	1200	4	M24
	Type3	1325	1380	1465	44	3	32	39													
1350	Type2	1462	1552	1642	46	6	28	39	1600	950	1343	978	1346	500	500	340	910	300	1350	4	M30
	Type3	1480	1540	1630	48	3	36	46													
1500	Type2	1620	1710	1800	48	6	32	39	1750	1050	1439	1073	1456	550	500	340	1060	300	1500	4	M30
	Type3	1635	1700	1795	50	3	40	46													

# MC-W

Quick Closing

φ 75 mm ~ φ150 mm



## Material of major parts

No.	Part Name	Material	No.	Part Name	Material	No.	Part Name	Material
1	Body	FC200 / FCD450-10	6	Seat on Body	SUS304	11	Sunk Head Plug	Synthetic rubber / SUS304
2	Disc	FC200 / FCD450-10	7	Arm Shaft	SUS304	12	Micro Switch	-
3	Bonnet	FC200 / FCD450-10	8	Seat on disc	Synthetic rubber / SUS304	13	Scale plate	SUS304
4	Arm	FC200 / FCD450-10	9	Gasket	Synthetic rubber			
5	Weight	FCD450-10	10	Sunk Head Plug	SUS304			

No.11,12 and 13 are optional

## Dimensions

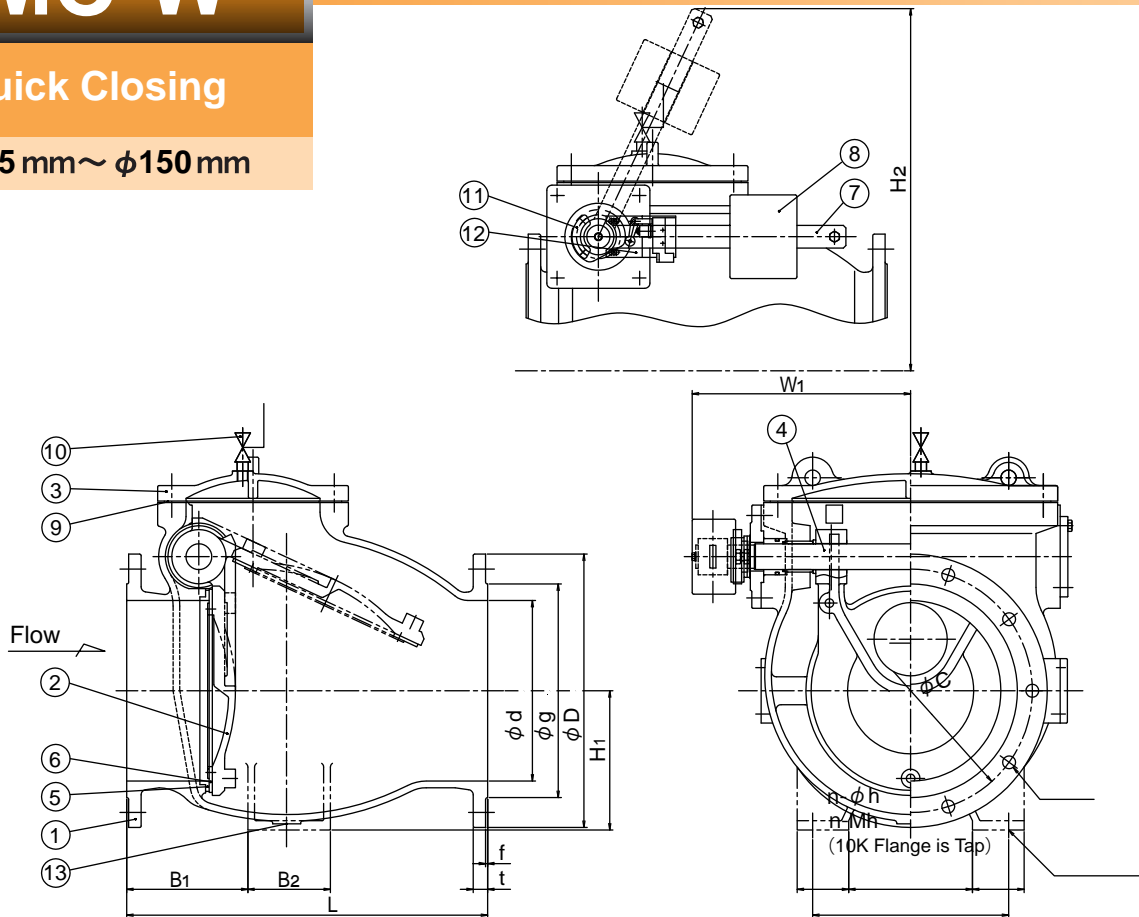
Unit :mm

Symbol		g	C	D	t	f	n	h	L	H1	H	F
75	Type2	125	168	211	24	3	4	19	250	98	173	217
	Type3		150	185			8	M16				
100	Type2	152	195	238	25	3	4	19	270	112	188	232
	Type3		175	210			8	M16				
125	Type2	177	220	263	25	3	6	19	330	139	218	247
	Type3		210	250			8	M20				
150	Type2	204	247	290	26	3	6	19	370	160	243	257
	Type3		240	280			8	M20				

# MC-W

Quick Closing

φ 75 mm ~ φ150 mm



## Material of major parts

No.	Part Name	Material	No.	Part Name	Material	No.	Part Name	Material
1	Body	FC200 / FCD450-10	6	Seat on disc	Synthetic rubber	11	Scale plate	SUS304
2	Disc	FC200 / FCD450-10	7	Lever	SS400	12	Micro Switch	-
3	Bonnet	FC200 / FCD450-10	8	Weight	FC200	13	Drain Plug	SUS304
4	Arm Shaft	SUS304	9	Gasket	Synthetic rubber			
5	Seat on Body	SUS304	10	Stop Valve	CAC			

No.11,12 and 13 are optional

## Dimensions

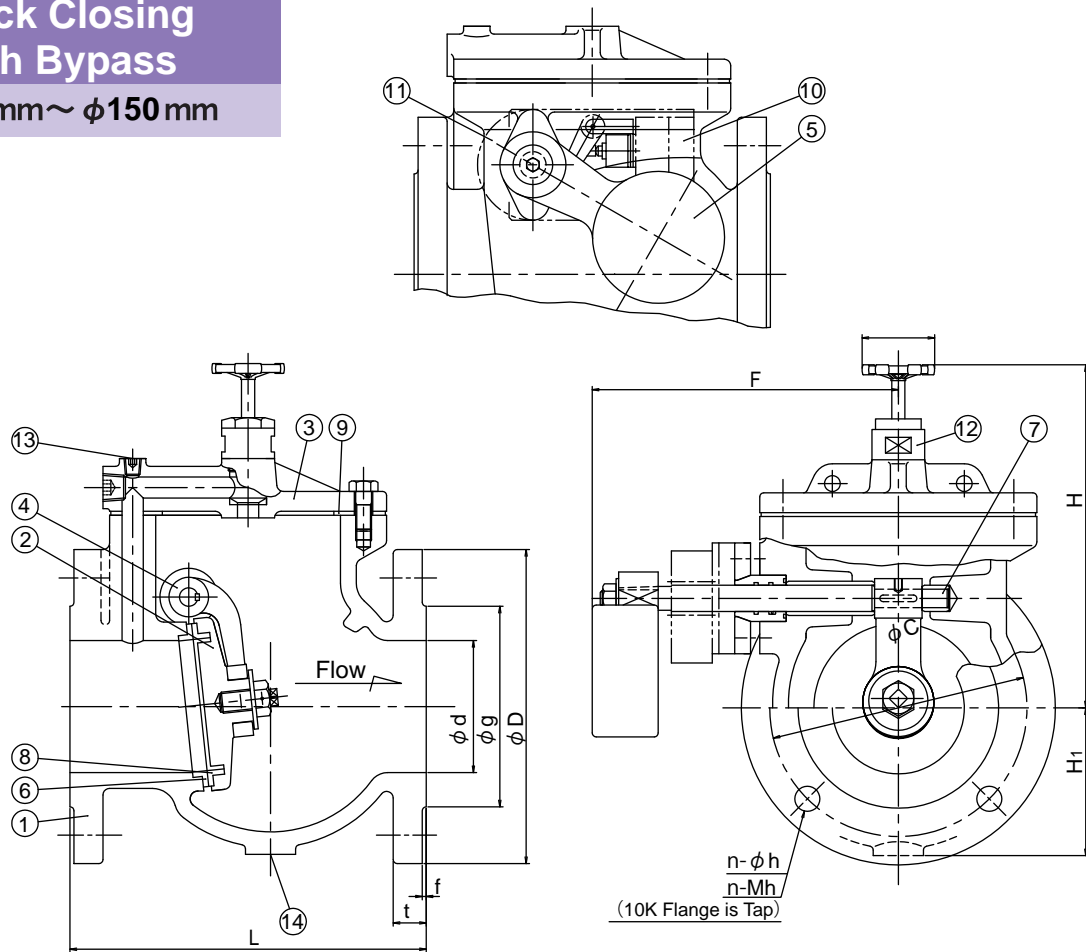
Unit :mm

Symbol Size(d)		g	C	D	t	f	n	h	L	H1	app. H2	app. W1	B1	B2	A	A1	a	n1	d1
200	Type2	256	299	342	24	3	8	19	470	180	492	298	150	140	140	50	200	2	M16
	Type3	262	290	330	24	2	12	23											
250	Type2	308	360	410	25	3	8	23	540	210	495	355	175	150	180	70	260	2	M16
	Type3	324	355	400	25	2	12	25											
300	Type2	362	414	464	27	3	10	23	620	240	633	381	200	150	240	70	320	2	M16
	Type3	368	400	445	27	3	16	25											
350	Type2	414	472	530	28	3	10	25	700	270	702	422	235	160	240	100	380	2	M16
	Type3	413	445	490	28	3	16	25											
400	Type2	466	524	582	29	3	12	25	760	300	816	451	265	160	290	100	430	2	M16
	Type3	475	510	560	29	3	16	27											
450	Type2	518	585	652	30	3	12	27	820	340	841	514	275	200	300	120	480	2	M16
	Type3	530	565	620	30	3	20	27											
500	Type2	572	639	706	31	4	12	27	900	380	912	544	310	200	360	120	540	2	M16
	Type3	585	620	675	31	3	20	27											

# MC-BW

Quick Closing  
with Bypass

φ 75 mm ~ φ 150 mm



## Material of major parts

No.	Part Name	Material	No.	Part Name	Material	No.	Part Name	Material
1	Body	FC200 / FCD450-10	6	Seat on Body	SUS304	11	Scale plate	SUS304
2	Disc	FC200 / FCD450-10	7	Arm Shaft	SUS304	12	Bypass valve	SUS
3	Bonnet	FC200 / FCD450-10	8	Seat on disc	Synthetic rubber	13	Sunk Head Plug	SUS304
4	Arm	FC200 / FCD450-10	9	Gasket	Synthetic rubber	14	Sunk Head Plug	SUS304
5	Weight	FCD450-10	10	Micro Switch	-			

No.10,11 and 14 are optional

## Dimensions

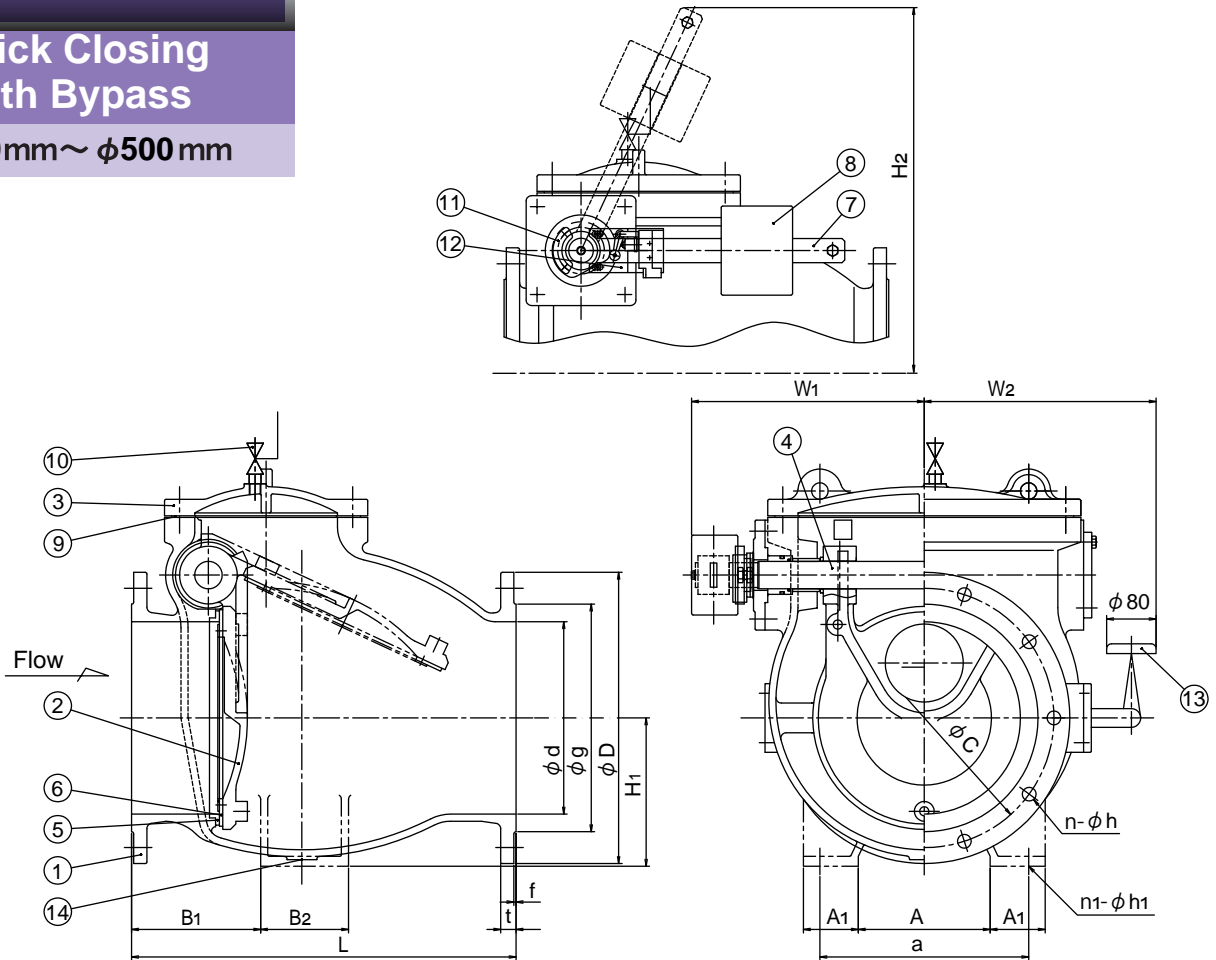
Unit :mm

Symbol Size(d)		g	C	D	t	f	n	h	L	H1	H	F
75	Type2	125	168	211	24	3	4	19	250	98	245	217
	Type3		150	185			8	M16				
100	Type2	152	195	238	25	3	4	19	270	112	260	232
	Type3		175	210			8	M16				
125	Type2	177	220	263	25	3	6	19	330	139	290	247
	Type3		210	250			8	M20				
150	Type2	204	247	290	26	3	6	19	370	160	315	257
	Type3		240	280			8	M20				

# MC-BW

Quick Closing  
with Bypass

φ200mm~φ500mm



## Material of major parts

No.	Part Name	Material	No.	Part Name	Material	No.	Part Name	Material
1	Body	FC200 / FCD450-10	6	Seat on disc	Synthetic rubber	11	Scale plate	SUS304
2	Disc	FC200 / FCD450-10	7	Lever	SS400	12	Micro Switch	-
3	Bonnet	FC200 / FCD450-10	8	Weight	FC200	13	Bypass valve	SUS
4	Arm Shaft	SUS304	9	Gasket	Synthetic rubber	14	Drain Plug	SUS304
5	Seat on Body	SUS304	10	Stop Valve	CAC			

No.11,12 and 14 are optional

## Dimensions

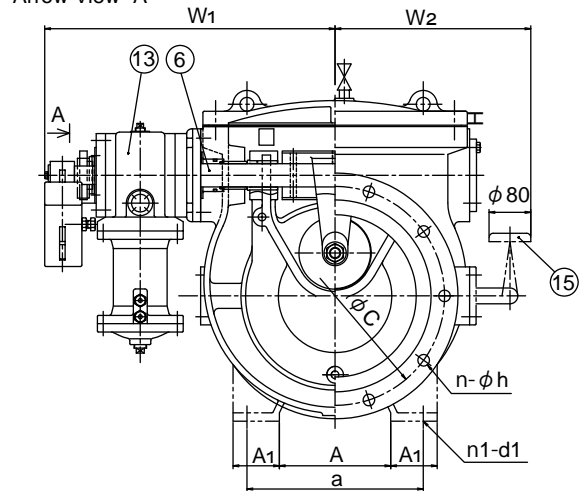
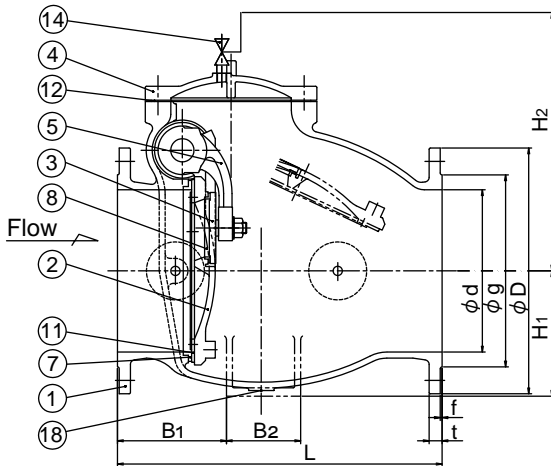
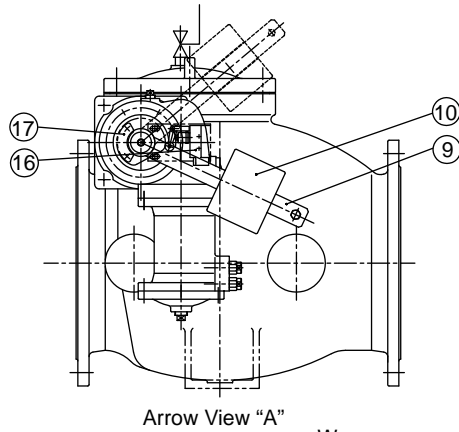
Unit :mm

Symbol Size(d)		g	C	D	t	f	n	h	L	H1	app. H2	app. W1	app. W2	B1	B2	A	A1	a	n1	d1
200	Type2	256	299	342	24	3	8	19	470	180	492	298	270	150	140	140	50	200	2	M16
	Type3	262	290	330	24	2	12	23												
250	Type2	308	360	410	25	3	8	23	540	210	495	355	330	175	150	180	70	260	2	M16
	Type3	324	355	400	25	2	12	25												
300	Type2	362	414	464	27	3	10	23	620	240	633	381	374	200	150	240	70	320	2	M16
	Type3	368	400	445	27	3	16	25												
350	Type2	414	472	530	28	3	10	25	700	270	702	422	422	235	160	240	100	380	2	M16
	Type3	413	445	490	28	3	16	25												
400	Type2	466	524	582	29	3	12	25	760	300	816	451	457	265	160	290	100	430	2	M16
	Type3	475	510	560	29	3	16	27												
450	Type2	518	585	652	30	3	12	27	820	340	841	514	515	275	200	300	120	480	2	M16
	Type3	530	565	620	30	3	20	27												
500	Type2	572	639	706	31	4	12	27	900	380	912	544	545	310	200	360	120	540	2	M16
	Type3	585	620	675	31	3	20	27												

# MC-BK

Slow Closing  
with Dashpot

φ150mm ~ φ500mm



\* No installation mount is attached for 500mm and smaller model as default

## Material of major parts

No.	Part Name	Material	No.	Part Name	Material	No.	Part Name	Material
1	Body	FC200 / FCD450-10	7	Seat on Body	CAC406 / SUS304	13	Shock Absorber	-
2	Disc	FC200 / FCD450-10	8	Seat on small disc	CAC406 / SUS304	14	Ball Valve	C3771
3	Small Disc	SUS304	9	Lever	SS400	15	Stop Valve	SCS
4	Bonnet	FC200 / FCD450-10	10	Weight	FC200	16	Micro Switch	-
5	Arm	FC200 / FCD450-10	11	Seat on disc	Synthetic rubber	17	Scale plate	SUS304
6	Arm Shaft	SUS403 / SUS304	12	Gasket	Synthetic rubber	18	Drain Plug	SUS304

No.16,17 and 18 are optional

## Dimensions

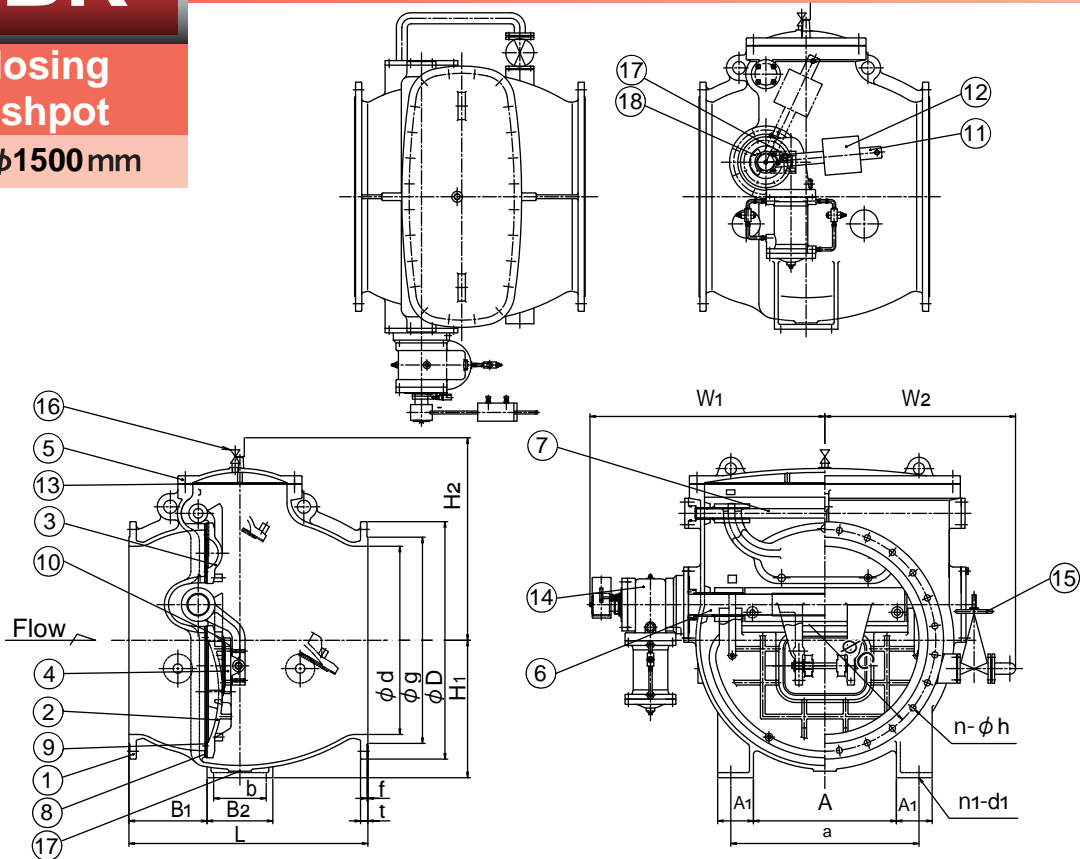
Unit :mm

Symbol		g	C	D	t	f	n	h	L	H1	app. H2	app. W1	app. W2	B1	B2	A	A1	a	n1	d1
150	Type2	204	247	290	23	3	6	19	370	170	368	448	240	110	120	100	50	160	2	M16
	Type3	212	240	280	23	2	8	23												
200	Type2	256	299	342	24	3	8	19	470	180	404	478	270	150	140	140	50	200	2	M16
	Type3	262	290	330	24	2	12	23												
250	Type2	308	360	410	25	3	8	23	540	210	443	530	330	175	150	180	70	260	2	M16
	Type3	324	355	400	25	2	12	25												
300	Type2	362	414	464	27	3	10	23	620	240	504	561	374	200	150	240	70	320	2	M16
	Type3	368	400	445	27	3	16	25												
350	Type2	414	472	530	28	3	10	25	700	270	557	626	422	235	160	240	100	380	2	M16
	Type3	413	445	490	28	3	16	25												
400	Type2	466	524	582	29	3	12	25	760	300	637	661	457	265	160	290	100	430	2	M16
	Type3	475	510	560	29	3	16	27												
450	Type2	518	585	652	30	3	12	27	820	340	649	706	515	275	200	300	120	480	2	M16
	Type3	530	565	620	30	3	20	27												
500	Type2	572	639	706	31	4	12	27	900	380	708	736	545	310	200	360	120	540	2	M16
	Type3	585	620	675	31	3	20	27												

# MC-BK

Slow Closing  
with Dashpot

φ600mm~φ1500mm



## Material of major parts

No.	Part Name	Material	No.	Part Name	Material	No.	Part Name	Material
1	Body	FC200 / FCD450-10	8	Seat on Body	CAC406 / SUS304	15	Gate Valve	FC or SCS
2	Disc(lower)	FC200 / FCD450-10	9	Seat on disc	Synthetic rubber	16	Ball Valve	C3771
3	Disc (upper)	FC200 / FCD450-10	10	Seat on small disc	Synthetic rubber	17	Micro Switch	-
4	Small Disc	FCD450-10	11	Lever	SS400	18	Scale plate	SUS304
5	Bonnet	FC200 / FCD450-10	12	Weight	FC200	19	Drain Plug	SUS304
6	Arm Shaft(lower)	SUS403 / SUS304	13	Gasket	Synthetic rubber			
7	Arm Shaft(upper)	SUS403 / SUS304	14	Shock Absorber	-			

No.17,18 and 19 are optional

## Dimensions

Unit :mm

Symbol Size(d)		g	C	D	t	f	n	h	L	H1	app. H2	app. W1	app. W2	B1	B2	b	A	A1	a	n1	d1
600	Type2	676	743	810	32	4	16	27	810	480	757	919	738	275	250	-	420	150	600	2	M20
	Type3	690	730	795	32	3	24	33													
700	Type2	780	854	928	33	4	16	33	880	530	807	984	803	295	250	-	520	150	700	2	M20
	Type3	800	840	905	34	3	24	33													
800	Type2	886	960	1034	36	5	20	33	1020	600	892	1139	929	350	300	-	560	180	800	2	M20
	Type3	905	950	1020	36	3	28	33													
900	Type2	990	1073	1156	38	5	20	33	1160	650	989	1194	984	385	350	-	640	190	900	2	M24
	Type3	1005	1050	1120	38	3	28	33													
1000	Type2	1096	1179	1262	39	5	24	33	1270	730	1077	1249	1014	415	350	-	760	190	1000	2	M24
	Type3	1110	1160	1235	40	3	28	39													
1100	Type2	1200	1283	1366	41	5	24	33	1400	800	1133	1379	1143	450	420	280	780	230	1100	4	M24
	Type3	1220	1270	1345	42	3	28	39													
1200	Type2	1304	1387	1470	43	5	28	33	1500	880	1223	1449	1213	500	420	280	880	230	1200	4	M24
	Type3	1325	1380	1465	44	3	32	39													
1350	Type2	1462	1552	1642	46	6	28	39	1600	950	1343	1544	1346	500	500	340	910	300	1350	4	M30
	Type3	1480	1540	1630	48	3	36	46													
1500	Type2	1620	1710	1800	48	6	32	39	1750	1050	1439	1639	1456	550	500	340	1060	300	1500	4	M30
	Type3	1635	1700	1795	50	3	40	46													

## Ordering Information

Please include the following information when ordering

1. Nominal size
2. Quantity
3. Maximum working pressure and normal operation pressure
4. Media
5. Operating temperature
6. Flange Type
7. Installation condition
8. Material option
9. Optional bypass request ( Y / N )
10. Optional dashpot request ( Y / N )
11. Optional counter weight request ( Y / N )
12. Paint color request
13. Delivery request date
14. Other special instruction

Any information in this document is subject to change without notice.



***Maezawa Industries, Inc.***

5-11 Nakacho, Kawaguchi-city, Saitama 3328556 JAPAN

TEL: +8148-251-5511 FAX: +8148-251-9375

<http://www.maezawa.co.jp>

