

Aqua Tech



水のマイゼツ

NO. 62e

Muddy-Hi Valve

Eccentric Plug Valve

Type MQV-50

Type MQV-2001



Maezawa Industries, Inc.

■ Features

Best for Muddy or with Earth and Sand Water Application

The disc which moves away from the flow path gives wide opening for muddy water applications

Rapid Open / Close Disc Operation for Sludge Removal

The quarter turn structure enables quicker operation, best applied for sludge removal at settling basin in WPP and STP

Eccentric Structure for Excellent Durability

Durable with less-wearing seat on disc with eccentric disc structure

Tight Shut-Off

The disc will be pressed towards seat on the disc to assure tight shut-off at full closed position

Ease of Maintenance

Top-entry design provides online maintainability of disc, seat on disc and seat on body

■ Standard Specification

Standard Specification		Type MQV-50	Type MQV-2001
Nominal Size		75mm - 600mm	
Operating Pressure		Type1(0.3MPa) , Type2(0.75MPa),Type3(1.0MPa)	
Media		Potable water, Sewerage works and Irrigation water	
Flange Dimension		Conforming to JIS G 5527	
Face to Face Dimension	Conforming to JWWA B 122	DN75 - DN250 and DN350	DN75 - DN400
	Based on Maezawa Standard	DN300 and DN400 - DN600	DN450 - DN600
Shell Test	DN 75 - DN350	1.75MPa	
	DN400 - DN600	1.4MPa	
Seat Leakage Test		Type1(0.3MPa) , Type2(0.75MPa),Type3(1.0MPa)	
Actuator type		Manual, Electric and Air Cylinder	

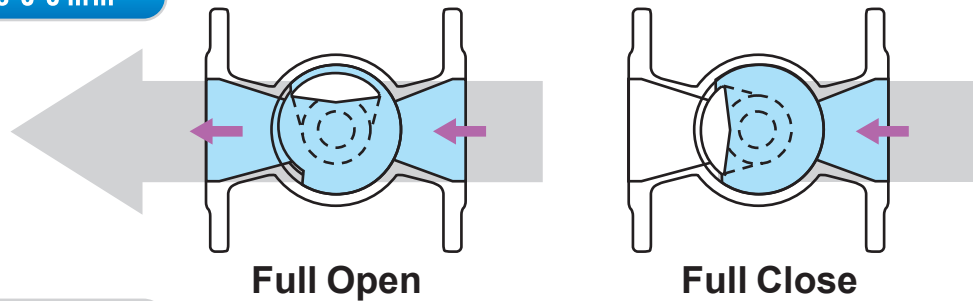
			Type MQV-50		Type MQV-2001	
	Material	Body		FCD450-10(ASTM 65-45-12)		FCD450-10
Disc		DN75 - DN300	SCS13		FCD450-10	
		DN350 - DN600	FCD450-10			
Seat on Body		NBR		DN75 - DN300	Nickel	
				DN350 - DN600	NBR	
Seat on Disc		DN75 - DN300	SCS13	DN75 - DN300	NBR	
		DN350 - DN600	Hard chrome plating	DN350 - DN600	Hard chrome plating	
Coating		Interior	(Portable water)			
			Epoxy Powder Coating			
			(Sewerage works and Irrigation water)			
	Synthetic resin for water supply					
	Exterior	As per order				

Mechanism

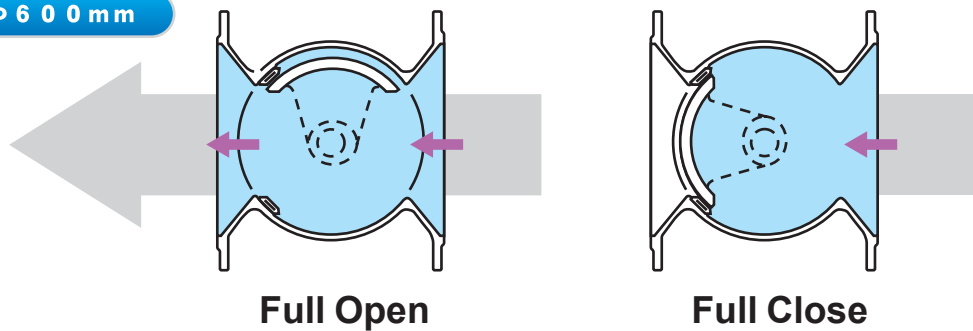
The disc is designed to hide inside the valve body at full open position in order to avoid disturbing the water flow

The disc will be tightly pressed against the valve seat by water pressure at full-closed position to ensure shut-off

φ 75 mm ~ φ 300 mm



φ 350 mm ~ φ 600 mm



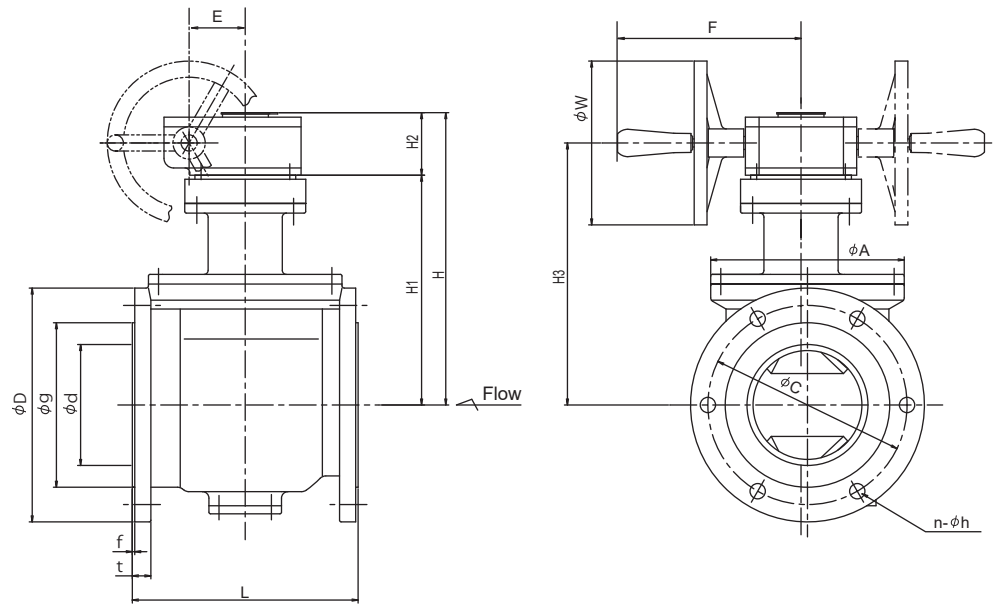
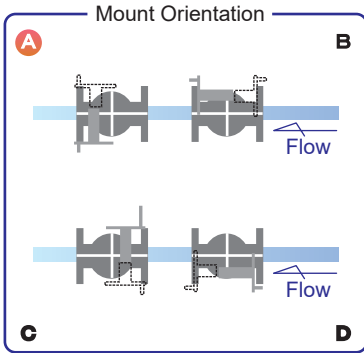
Actuator Selection Guide(0.3MPa below)

Symbol Size(d)	Electric(with WG Gear)		Air Cylinder	
	MQV-50-ESRH MQV-50-ESKD	MQV-50-ENJB	MQV-50-APS (Single acting, Springreturn)	MQV-50-AP (double acting)
75	LTRH-01 / 0.2kW	JMB-04 / 0.2kW	SKS-20	SK-10
100			SKDS-60	SK-20
150			SKDS-100	SKD-60
200			SKDS-200	
250			SKDS-300	SKD-100
300	LTKD-01 / 0.2kW	JMB-03 / 0.4kW	SKDS-400	SKD-200
350	LTKD-01 / 0.4kW		SKDS-600	SKD-300
400	LTKD-01 / 0.4kW		SKDS-800	
450	LTKD-02 / 0.75kW		JMB-00 / 0.75kW	SKFS-1500
500	LTKD-05 / 1.5kW	JMB-0 / 1.5kW	SKFS-1500	SKD-600
600				

Symbol Size(d)	Electric(with WG Gear)		Air Cylinder	
	MQV-2001-ESRH MQV-2001-ESKD	MQV-2001-ENJB	MQV-2001-APS (Single acting, Springreturn)	MQV-50-AP (double acting)
75	LTRH-01 / 0.2kW	JMB-04 / 0.2kW	SKS-20	SK-10
100			SKDS-30	SK-20
150			SKDS-60	SKD-60
200			SKDS-100	
250			SKDS-200	SKD-100
300	LTRH-01 / 0.4kW	JMB-04 / 0.4kW	SKDS-300	SKD-200
350	LTKD-01 / 0.4kW	JMB-03 / 0.4kW	SKDS-400	
400	LTKD-01 / 0.4kW		SKDS-600	SKD-300
450	LTKD-01 / 0.75kW		SKDS-800	
500	LTKD-02 / 0.75kW	JMB-00 / 0.75kW	SKFS-1500	SKD-400
600				SKD-600

Manual Actuator
■ Type MQV-50

φ 75mm ~ φ 300mm

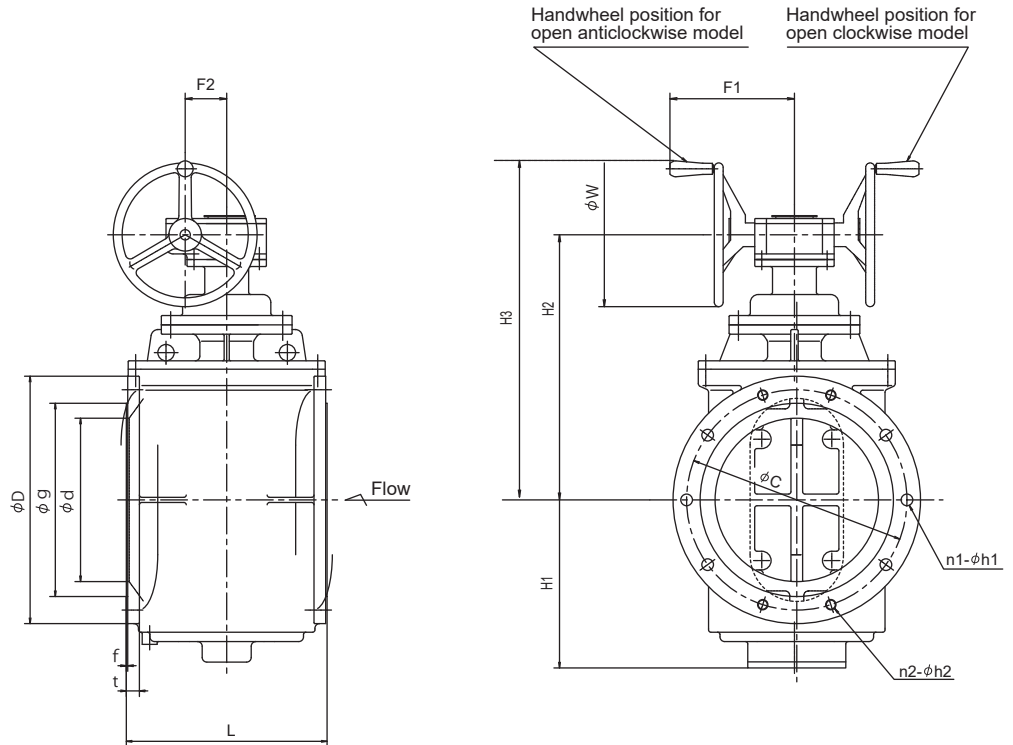


Unit: mm

Symbol Size(d)	JIS G 5527 (7.5K)							JIS G 5527 (10K)							L	A	H	H1	H2	H3	E	F	W
	g	C	D	n	h	f	t	g	C	D	n	h	f	t									
75	125	168	211	4	19	3	22	125	150	211	8	M16	3	22	240	170	283	205	78	245	70	227	203
100	152	195	238	4	19	3	22	152	175	238	8	M16	3	22	250	195	308	230	78	270	70	227	203
150	204	247	290	6	19	3	23	204	240	290	8	M20	3	23	280	240	363	285	78	325	70	227	203
200	256	299	342	2	M16	3	24	256	290	342	12	M20	3	24	300	285	408	330	78	370	70	227	203
				6	19																		
250	308	360	410	2	M20	3	25	308	355	410	12	M22	3	25	380	365	463	385	78	425	70	227	203
				6	23																		
300	362	414	464	2	M20	4	27	362	400	464	16	M22	4	27	450	410	533	440	93	493	89	267	308
				8	23																		

Manual Actuator
■ Type MQV-50

φ 350mm ~ φ 600mm



Unit: mm

Symbol Size(d)	JIS G 5527 (7.5K)										JIS G 5527 (10K)								L	H1	H2	H3	F1	F2	W
	g	C	D	f	t	n1	h1	n2	h2	g	C	D	f	t	n1	h1	n2	h2							
350	414	472	530	3	28	6	25	4	M22	414	445	530	3	28	8	25	8	M22	430	334	510	664	267	89	308
400	466	524	582	3	29	8	25	4	M22	466	510	582	3	29	8	27	8	M24	500	378	581	811	320	108	460
450	518	585	652	3	30	8	27	4	M24	518	565	652	3	30	12	27	8	M24	560	428	671	936	545	270	500
500	572	639	706	3	31	8	27	4	M24	572	620	706	3	31	12	27	8	M24	620	468	736	1001	545	270	500
600	676	743	810	3	32	8	27	8	M24	676	730	810	3	32	12	33	12	M30	740	548	843	1150	662	325	600

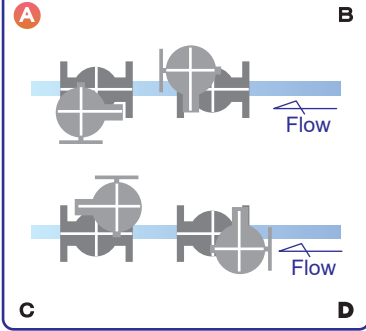


Electric Actuator

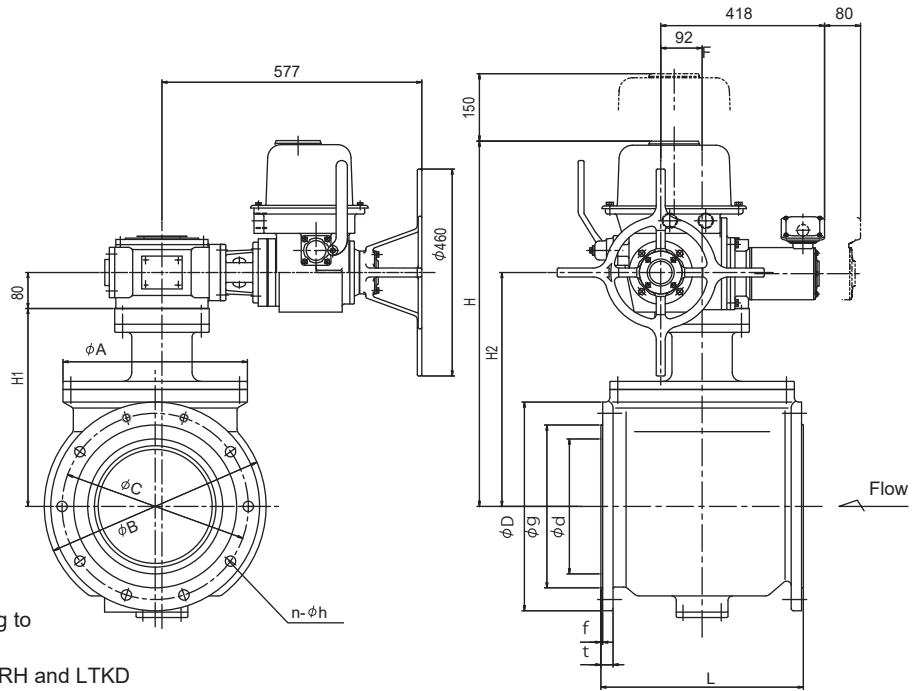
■Type MQV-50-E

φ 75mm~ φ 300mm

Mount Orientation



- * 1 The Standard orientation is **A**
B,C and D is also available on request
- * 2 The flange hole can be threaded according to the flange type
- * 3 The size in this drawing is for actuator: LTRH and LTKD
Consult our Sales for JMB type



Unit: mm

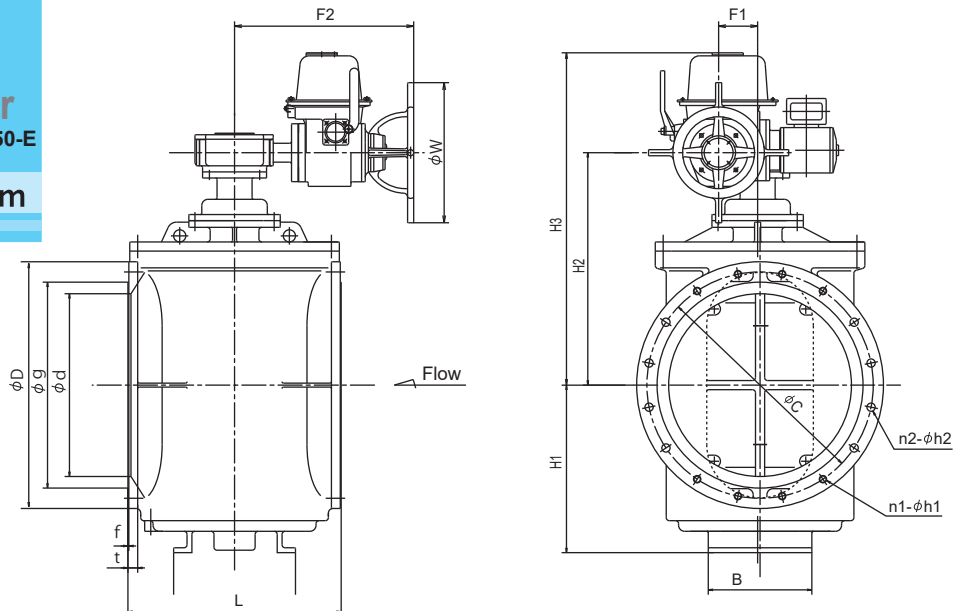
Symbol Size(d)	JIS G 5527 (7.5K)							JIS G 5527 (10K)							L	A	B	H	H1	H2
	g	C	D	n	h	f	t	g	C	D	n	h	f	t						
75	125	168	211	4	19	3	22	125	150	211	8	M16	3	22	240	170	—	578	205	285
100	152	195	238	4	19	3	22	152	175	238	8	M16	3	22	250	195	—	603	230	310
150	204	247	290	6	19	3	23	204	240	290	8	M20	3	23	280	240	—	658	285	365
200	256	299	342	2	M16	3	24	256	290	342	12	M20	3	24	300	285	340	703	330	410
				6	19															
250	308	360	410	2	M20	3	25	308	355	410	12	M22	3	25	380	365	419	758	385	465
				6	23															
300	362	414	464	2	M20	4	27	362	400	464	16	M22	4	27	450	410	493	813	440	520
				8	23															



Electric Actuator

■Type MQV-50-E

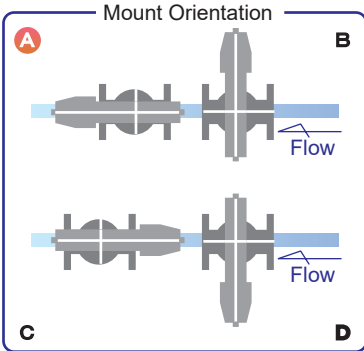
φ 350mm~ φ 600mm



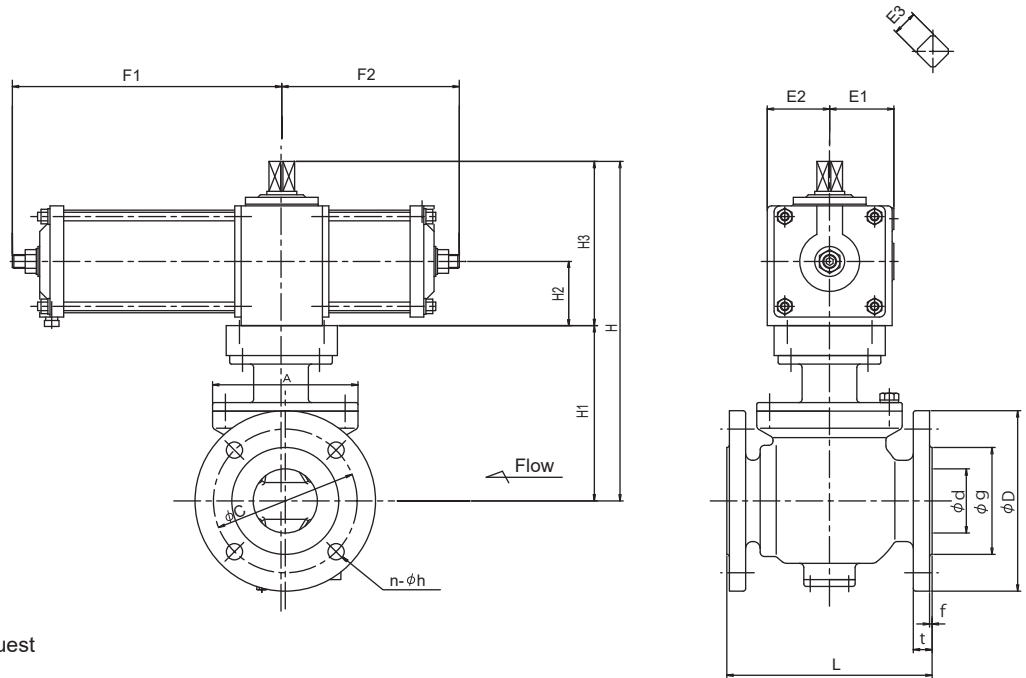
Unit: mm

Symbol Size(d)	JIS G 5527 (7.5K)								JIS G 5527 (10K)								L	B	H1	H2	H3	F1	F2	W		
	g	C	D	f	t	n1	h1	n2	h2	g	C	D	f	t	n1	h1									n2	h2
350	414	472	530	3	28	6	25	4	M22	414	445	530	3	28	8	25	8	M22	430	210	334	552	844	130	630	460
400	466	524	582	3	29	8	25	4	M22	466	510	582	3	29	8	27	8	M24	500	230	378	608	900	130	630	460
450	518	585	652	3	30	8	27	4	M24	518	565	652	3	30	12	27	8	M24	560	270	428	671	998	150	692	460
500	572	639	706	3	31	8	27	4	M24	572	620	706	3	31	12	27	8	M24	620	300	468	736	1063	150	692	460
600	676	743	810	3	32	8	27	8	M24	676	730	810	3	32	12	33	12	M30	740	340	548	927	1203	185	820	320

Air Cylinder Actuator (Single acting)
 ■Type MQV-50-APS
φ 75mm~ φ 450mm



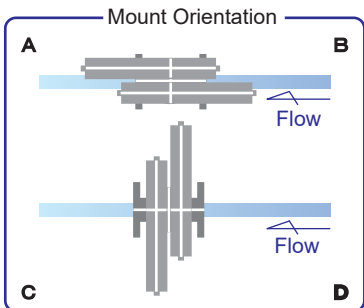
*1 The Standard orientation is **A**
 B,C and D is also available on request



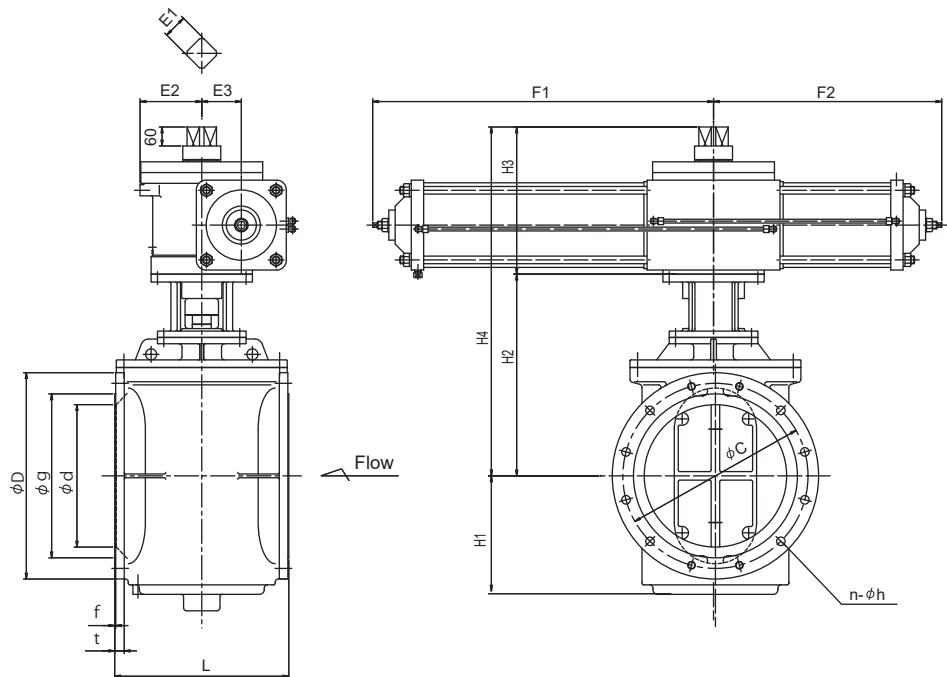
Unit: mm

Symbol Size(d)	JIS G 5527 (7.5K)								JIS G 5527 (10K)								L	A	H	H1	H2	H3	E1	E2	E3	F1	F2
	g	C	D	n	h	f	t	g	C	D	n	h	f	t													
75	125	168	211	4	19	3	22	125	150	211	8	M16	3	22	240	170	397	205	192	20	—	—	23	210	315		
100	152	195	238	4	19	3	22	152	175	238	8	M16	3	22	250	195	460	230	230	40	95	50	34	322	502		
150	204	247	290	6	19	3	23	204	240	290	8	M20	3	23	280	240	555	285	270	45	115	62.5	41	381	657		
200	256	299	342	2	M16	3	24	256	290	342	12	M20	3	24	300	285	635	330	305	50	130	75	48	450	733		
				6	19																						
250	308	360	410	2	M20	3	25	308	355	410	12	M22	3	25	380	365	735	385	350	50	145	90	52	542	843		
				6	23																						
300	362	414	464	2	M20	4	27	362	400	464	16	M22	4	27	450	410	825	440	385	50	155	100	56	591	956		
				8	23																						
350	414	472	530	6	25	3	28	414	445	530	8	25	3	28	430	—	912	527	385	50	56	155	100	956	591		
400	466	524	582	8	25	3	29	466	510	582	8	27	3	29	500	—	973	563	410	55	65	175	110	1026	646		
450	518	585	652	8	27	3	30	676	565	652	12	27	3	30	560	—	1078	613	465	60	75	195	125	1077	721		

Air Cylinder Actuator (Single acting)
 ■Type MQV-50-APS
φ 500mm~ φ 600mm



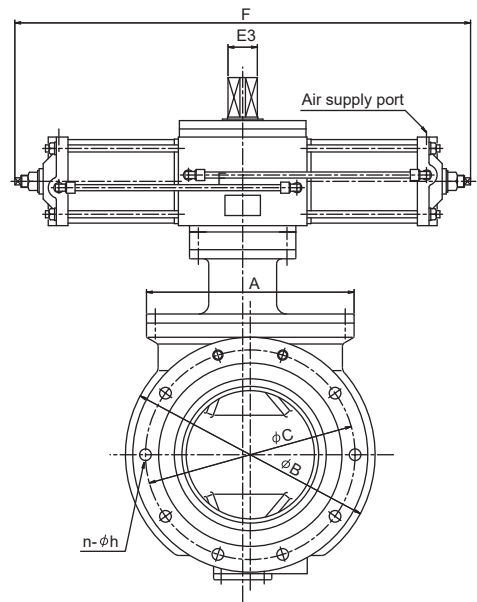
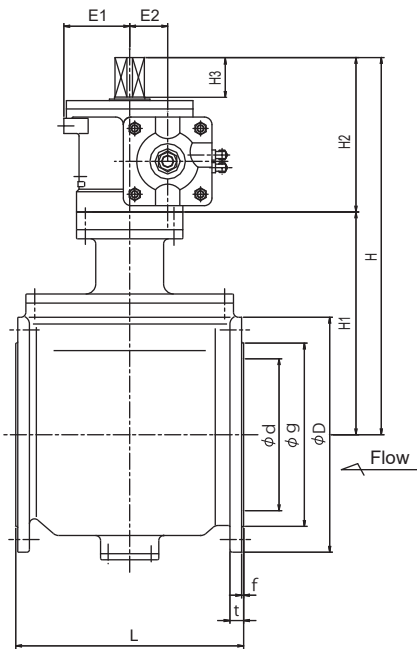
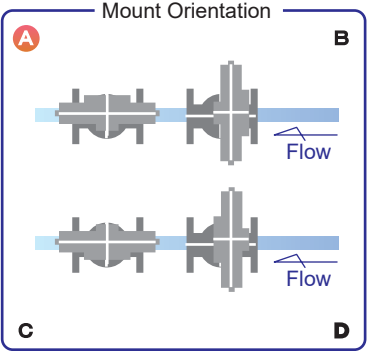
*2 The flange hole can be threaded according to the flange type



Unit: mm

Symbol Size(d)	JIS G 5527 (7.5K)								JIS G 5527 (10K)								L	H1	H2	H3	H4	E1	E2	E3	F1	F2
	g	C	D	n	h	f	t	g	C	D	n	h	f	t												
500	572	639	706	8	27	3	31	572	620	706	12	27	3	31	620	468	778	540	1318	56	315	315	1650	1650		
600	676	743	810	8	27	3	32	676	730	810	12	33	3	32	740	548	865	540	1405	65	315	315	1650	1650		

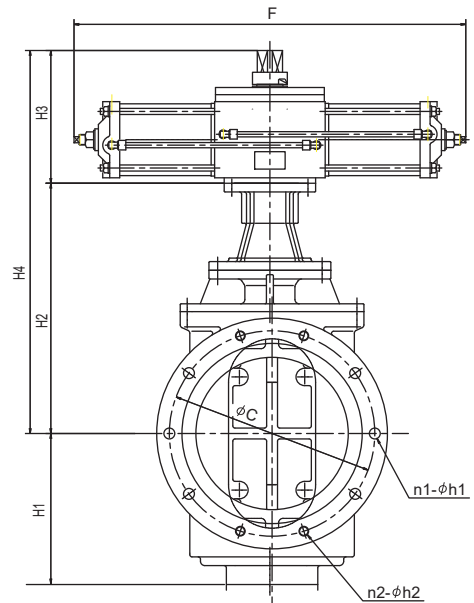
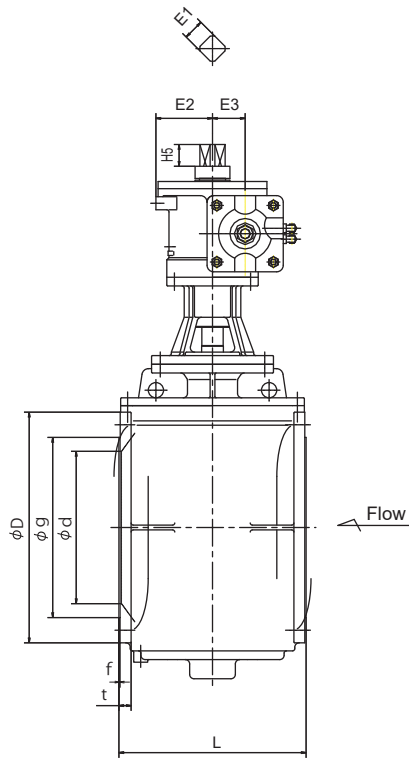
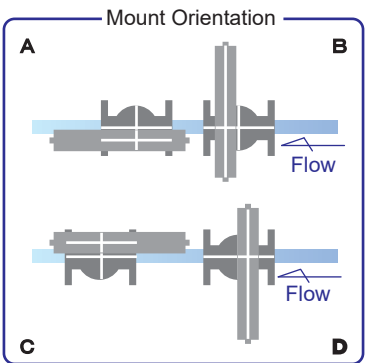
Air Cylinder Actuator (Double acting)
 ■ Type MQV-50-AP
 $\phi 75\text{mm} \sim \phi 300\text{mm}$



Unit: mm

Symbol	JIS G 5527 (7.5K)							JIS G 5527 (10K)							L	A	B	H	H1	H2	H3	E1	E2	E3	F1
	g	C	D	n	h	f	t	g	C	D	n	h	f	t											
75	125	168	211	4	19	3	22	125	150	211	8	M16	3	22	240	170	—	397	205	161	14	65	65	19	350
100	152	195	238	4	19	3	22	152	175	238	8	M16	3	22	250	195	—	422	230	192	20	73	73	23	395
150	204	247	290	6	19	3	23	204	240	290	8	M20	3	23	280	240	—	515	285	230	40	95	50	34	643
200	256	299	342	2	M16	3	24	256	290	342	12	M20	3	24	300	285	340	560	330	230	40	95	50	34	643
				6	19																				
250	308	360	410	2	M20	3	25	308	355	410	12	M22	3	25	380	365	419	655	385	270	45	115	62.5	41	762
				6	23																				
300	362	414	464	2	M20	4	27	362	400	464	16	M22	4	27	450	410	493	745	440	305	50	130	75	48	900
				8	23																				

Air Cylinder Actuator (Double acting)
 ■ Type MQV-50-AP
 $\phi 350\text{mm} \sim \phi 600\text{mm}$



Unit: mm

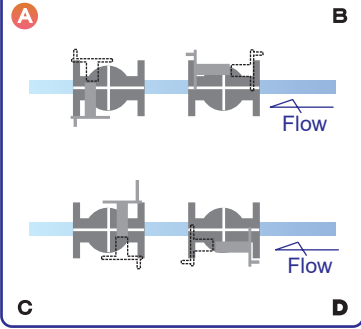
Symbol	JIS G 5527 (7.5K)									JIS G 5527 (10K)									L	H1	H2	H3	H4	H5	E1	E2	E3	F1	F2
	g	C	D	n1	h1	n2	h2	f	t	g	C	D	n1	h1	n2	h2	f	t											
350	414	472	530	6	25	4	M22	3	28	414	445	530	8	25	8	M24	3	28	430	334	527	305	832	50	48	130	75	900	956
400	466	524	582	8	25	4	M22	3	29	466	510	582	8	27	8	M24	3	29	500	378	563	350	913	50	52	145	90	1084	1026
450	518	585	652	8	27	4	M24	3	30	676	565	652	12	27	8	M24	3	30	560	428	613	350	963	50	52	145	90	1084	1077
500	572	639	706	8	27	4	M24	3	31	572	620	706	12	27	8	M24	3	31	620	468	653	385	1038	50	56	155	100	1182	1650
600	676	743	810	8	27	8	M24	3	32	676	730	810	12	33	12	M30	3	32	740	548	740	410	1150	55	65	175	110	1292	1650

Manual Actuator

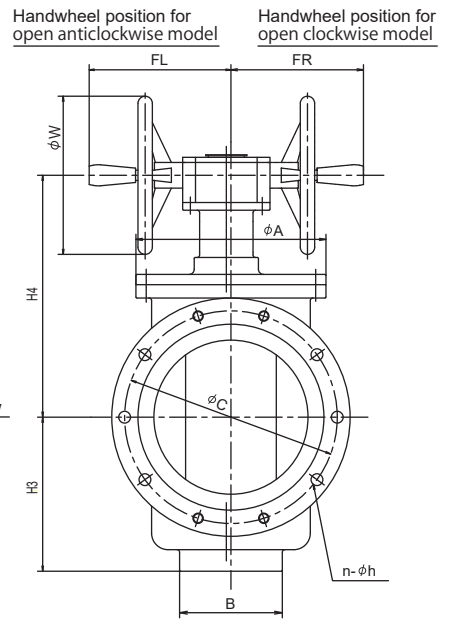
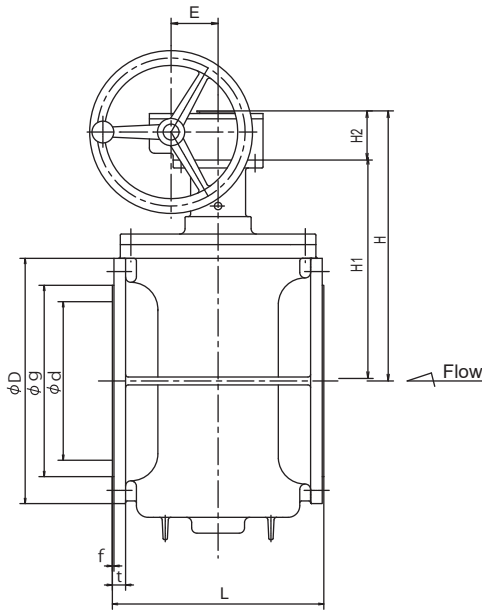
■ Type MQV-2001

φ 75mm ~ φ 300mm

Mount Orientation



- * 1 The Standard orientation is **A**. B, C and D is also available on request
- * 2 The flange hole can be threaded according to the flange type



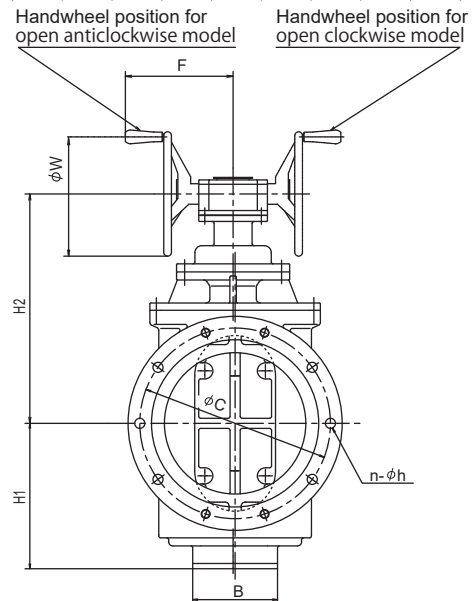
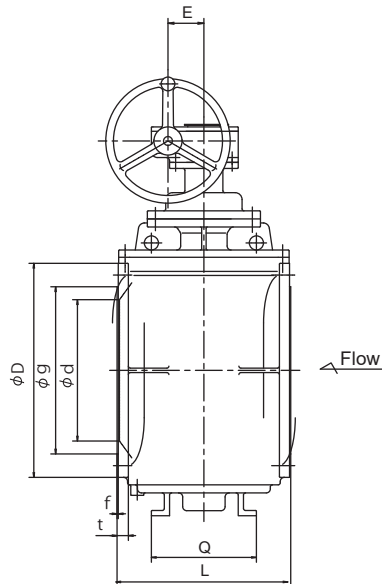
Unit: mm

Symbol	JIS G 5527 (7.5K)								JIS G 5527 (10K)																			
	g	C	D	n	h	f	t		g	C	D	n	h	f	t		L	A	B	H	H1	H2	H3	H4	FL	FR	E	W
75	125	168	211	4	19	3	21		125	150	211	8	M16	3	21		240	165	80	263	185	78	106	225	231	223	70	203
100	152	195	238	4	19	3	21		152	175	238	8	M16	3	21		250	180	90	273	195	78	119	235	225	229	70	203
150	204	247	290	6	19	3	22		204	240	290	8	M20	3	22		280	245	120	348	270	78	170	310	233	221	70	203
200	256	299	342	4	M16	3	23	256	290	342	12	M20	3	23	300	285	150	391	313	78	220	353	234	220	70	203		
				19																								
250	308	360	410	4	M20	3	24	308	355	410	12	M22	3	24	380	350	180	433	355	78	260	395	235	219	70	203		
				23																								
300	362	414	464	4	M20	3	25	362	400	464	16	M22	3	25	400	370	200	511	418	93	300	471	276	258	89	308		
				6																								

Manual Actuator

■ Type MQV-2001

φ 350mm ~ φ 600mm



Unit: mm

Symbol	JIS G 5527 (7.5K)								JIS G 5527 (10K)															
	g	C	D	n	h	f	t		g	C	D	n	h	f	t		L	B	Q	H1	H2	F	E	W
350	414	472	530	4	M22	3	28	414	445	530	8	M22	3	28	430	210	260	360	568	267	89	308		
				6	25																			
400	466	524	582	4	M22	3	29	466	510	582	8	M24	3	29	470	230	280	400	616	320	108	460		
				8	25																			
450	518	585	652	4	M24	3	30	518	565	652	8	M24	3	30	550	270	310	440	629	460	164	400		
				8	27																			
500	572	639	706	4	M24	3	31	572	620	706	8	M24	3	31	600	300	350	480	664	460	164	400		
				8	27																			
600	676	743	810	8	M24	3	32	676	730	810	12	M30	3	32	700	340	400	550	763	501	194	400		
				8	27																			

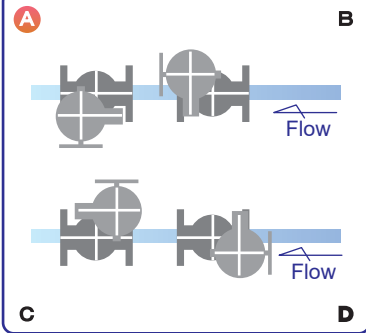


Electric Actuator

■ Type MQV-2001-ES

φ 75mm ~ φ 300mm

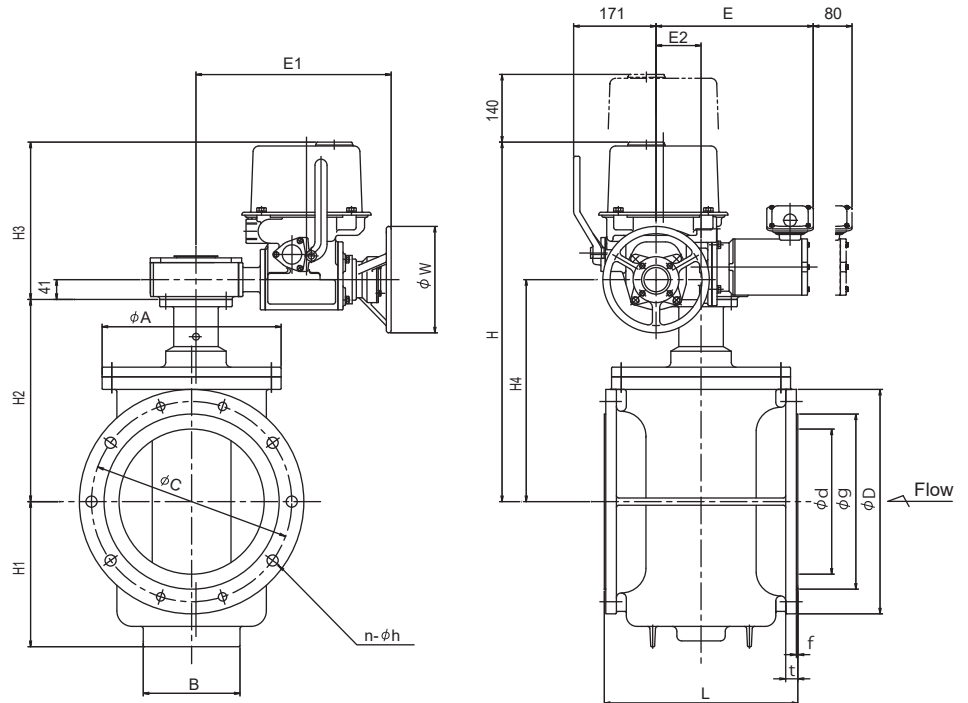
Mount Orientation



* 1 The Standard orientation is **A**
B, C and D is also available on request

* 2 The flange hole can be threaded according to the flange type

* 3 The size in this drawing is for actuator: LTRH and LTKD
Consult our Sales for JMB type



Unit: mm

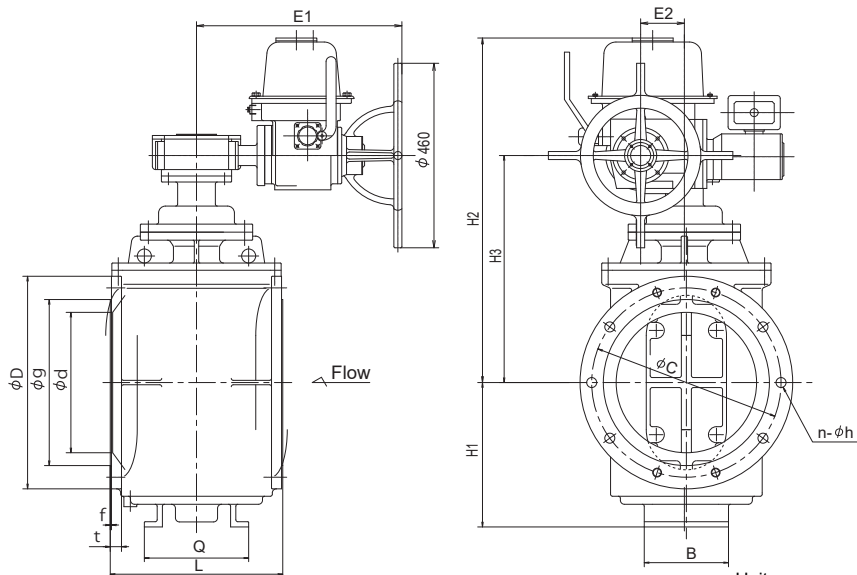
Symbol Size(d)	JIS G 5527 (7.5K)							JIS G 5527 (10K)							L	A	B	H	H1	H2	H3	H4	E	E1	E2	W
	g	C	D	n	h	f	t	g	C	D	n	h	f	t												
75	125	168	211	4	19	3	21	125	150	211	8	M16	3	21	240	165	80	514	106	185	329	230	375	396	62	203
100	152	195	238	4	19	3	21	152	175	238	8	M16	3	21	250	180	90	524	119	195	329	240	375	396	62	203
150	204	247	290	6	19	3	22	204	240	290	8	M20	3	22	280	245	120	599	170	270	329	315	375	396	62	203
200	256	299	342	4	M16	3	23	256	290	342	12	M20	3	23	300	285	150	642	220	313	329	358	375	396	62	220
				19																						
250	308	360	410	4	M20	3	24	308	355	410	12	M22	3	24	380	350	180	684	260	355	329	400	375	396	62	220
				23																						
300	362	414	464	4	M20	3	25	362	400	464	16	M22	3	25	400	370	200	743	300	418	325	459	379	403	93	220
				6	23																					



Electric Actuator

■ Type MQV-2001-ES

φ 350mm ~ φ 600mm



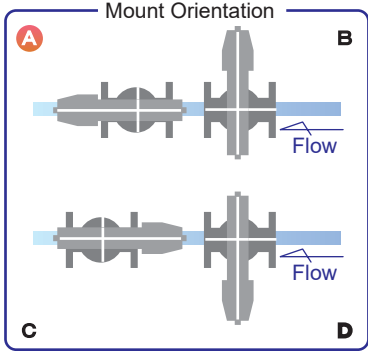
Unit: mm

Symbol Size(d)	JIS G 5527 (7.5K)							JIS G 5527 (10K)							L	Q	B	H1	H2	H3	E1	E2
	g	C	D	n	h	f	t	g	C	D	n	h	f	t								
350	414	472	530	4	M22	3	28	414	445	530	8	M22	3	28	430	260	210	360	859	566	512	109
				6	25																	
400	466	524	582	4	M22	3	29	466	510	582	8	M24	3	29	470	280	230	400	892	599	512	109
				8	25																	
450	518	585	652	4	M24	3	30	518	565	652	8	M24	3	30	550	310	270	440	922	629	512	109
				8	27																	
500	572	639	706	4	M24	3	31	572	620	706	8	M24	3	31	600	350	300	480	957	664	512	109
				8	27																	
600	676	743	810	8	M24	3	32	676	730	810	12	M30	3	32	700	400	340	550	1091	763	588	128
				27	33																	

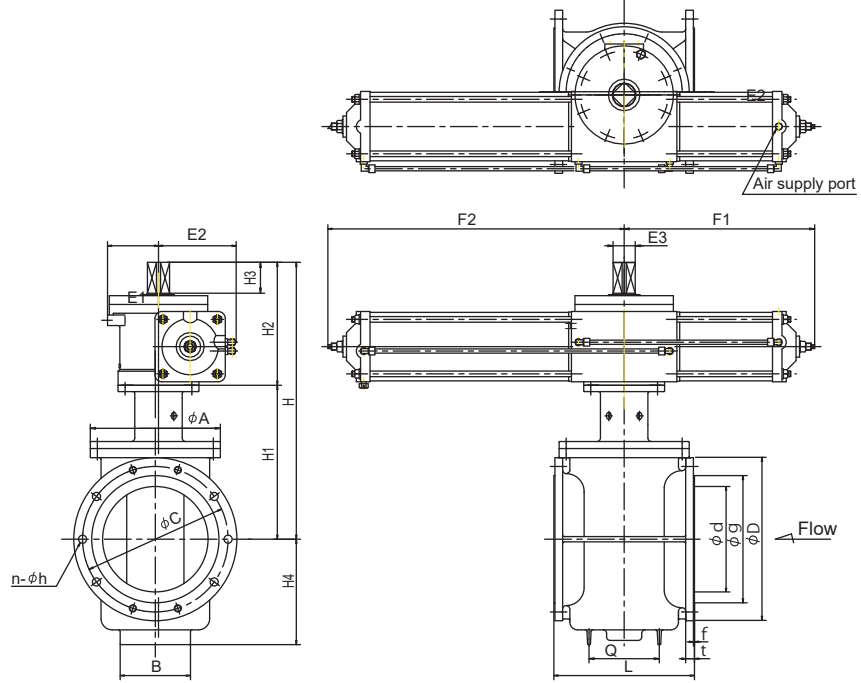
Air Cylinder Actuator (Single acting)

■Type
MQV-2001-APS

φ 75mm~φ 450mm



* 1 The Standard orientation is **A**
B,C and D is also available on request



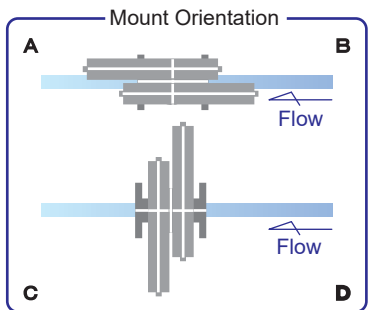
Unit: mm

Symbol	JIS G 5527 (7.5K)								JIS G 5527 (10K)								L	A	B	Q	H	H1	H2	H3	H4	E1	E2	E3	F1	F2
	g	C	D	n	h	f	t	g	C	D	n	h	f	t																
75	125	168	211	4	19	3	21	125	150	211	8	M16	3	21	240	165	80	—	388	196	192	35	105.5	74	74	23	210	315		
100	152	195	238	4	19	3	21	152	175	238	8	M16	3	21	250	180	90	—	455	250	205	53	119	80	125	28	273.5	440		
150	204	247	290	6	19	3	22	204	240	290	8	M20	3	22	280	245	120	120	522	292	230	58	170	95	145	34	321.5	502		
200	256	299	342	4	M16	3	23	256	290	342	12	M20	3	23	300	285	150	150	625	355	270	68	220	115	165	41	381	657		
				19																										
250	308	360	410	4	M20	3	24	308	355	410	12	M22	3	24	380	350	180	180	695	390	305	78	260	130	200	48	450	733		
				23																										
300	362	414	464	4	M20	3	25	362	400	464	16	M22	3	25	400	370	200	200	788	438	350	88	300	145	225	52	542	843		
				6																										
350	414	472	530	4	M20	3	28	414	445	530	8	M22	3	28	430	422	210	260	960	575	385	50	360	155	100	56	591	956		
				6																										
400	466	524	582	4	M22	3	29	466	510	582	8	M24	3	29	470	460	230	280	1018	608	410	55	400	175	110	65	646	1026		
				8																										
450	518	585	652	4	M24	3	30	518	565	652	8	M24	3	30	550	540	270	310	1103	638	465	60	440	195	125	75	721	1077		
				8																										

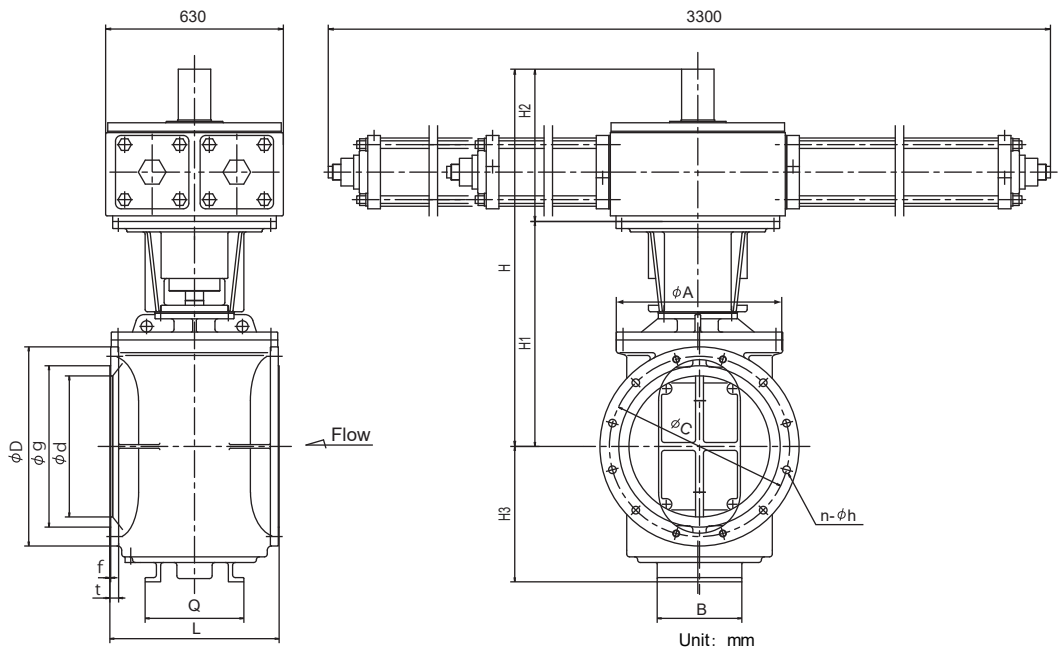
Air Cylinder Actuator (Single acting)

■Type
MQV-2001-APS

φ 500mm~φ 600mm



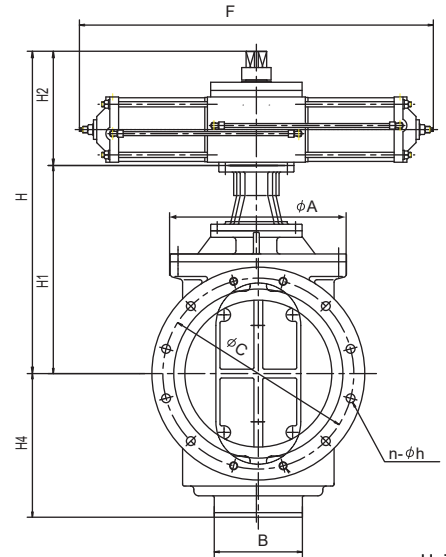
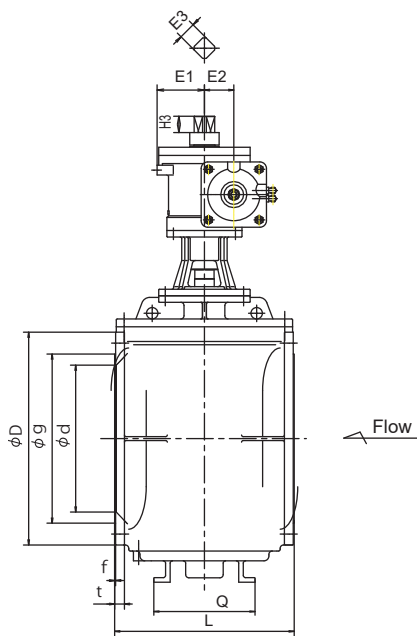
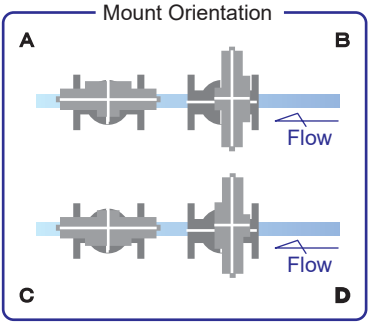
* 2 The flange hole can be threaded according to the flange type



Unit: mm

Symbol	JIS G 5527 (7.5K)								JIS G 5527 (10K)								L	A	B	Q	H	H1	H2	H3
	g	C	D	n	h	f	t	g	C	D	n	h	f	t										
500	572	639	706	4	M24	3	31	572	620	706	8	M24	3	31	600	590	300	350	1338	798	540	480		
				8																				
600	676	743	810	4	M24	3	32	676	730	810	12	M30	3	32	700	688	340	400	1405	865	540	550		
				8																				

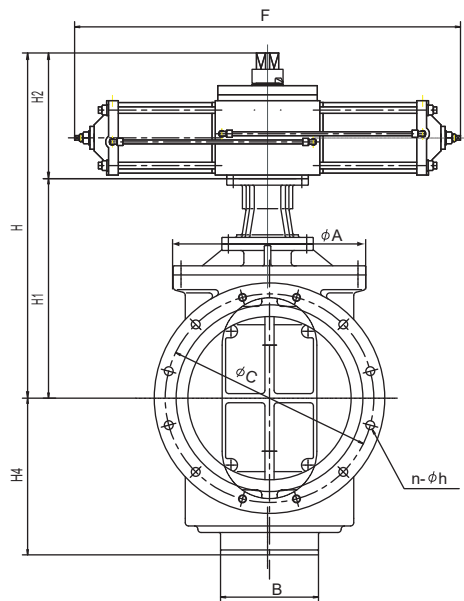
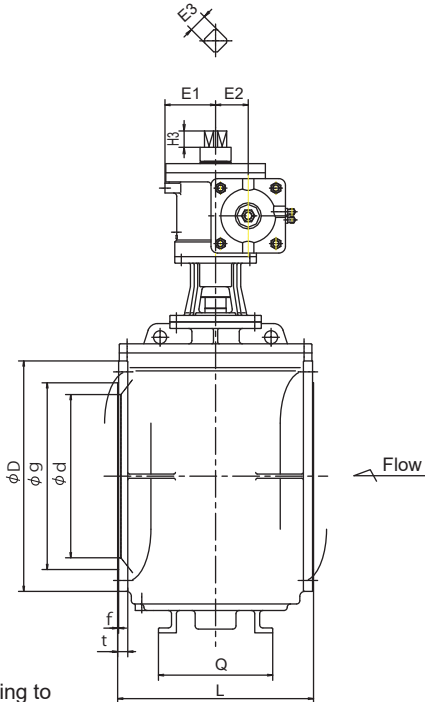
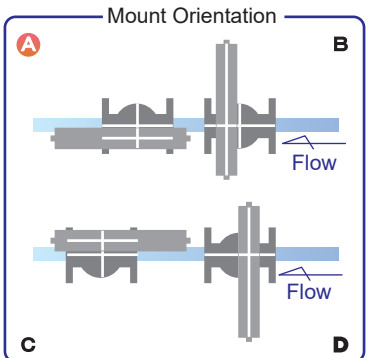
Air Cylinder Actuator (Double acting)
 ■Type
 MQV-2001-AP
φ 75mm~ φ 450mm



Unit: mm

Symbol Size(d)	JIS G 5527 (7.5K)							JIS G 5527 (10K)							L	A	B	Q	H	H1	H2	H3	H4	E1	E2	E3	F
	g	C	D	n	h	f	t	g	C	D	n	h	f	t													
75	125	168	211	4	19	3	21	125	150	211	8	M16	3	21	240	165	80	—	357	196	161	24	105.5	66	66	19	350
100	152	195	238	4	19	3	21	152	175	238	8	M16	3	21	250	180	90	—	442	250	192	35	119	74	74	23	395
150	204	247	290	6	19	3	22	204	240	290	8	M20	3	22	280	245	120	120	522	292	230	58	170	95	145	34	643
200	256	299	342	4	M16 19	3	23	256	290	342	12	M20	3	23	300	285	150	150	585	355	230	58	220	95	145	34	643
250	308	360	410	4	M20 23	3	24	308	355	410	12	M22	3	24	380	350	180	180	660	390	270	68	260	115	165	48	762
300	362	414	464	4 6	M20 23	3	25	362	400	464	16	M22	3	25	400	370	200	200	743	438	305	78	300	130	200	48	900
350	414	472	530	4 6	M22 25	3	28	414	445	530	8	M22 25	3	28	430	422	210	260	880	575	305	50	360	130	75	48	900
400	466	524	582	4 8	M22 25	3	29	466	510	582	8	M24 27	3	29	470	460	230	280	958	608	350	50	400	145	90	52	1084
450	518	585	652	4 8	M24 27	3	30	518	565	652	8 12	M24 27	3	30	550	540	270	310	958	638	350	50	440	145	90	52	1084

Air Cylinder Actuator (Double acting)
 ■Type
 MQV-2001-AP
φ 500mm~ φ 600mm



Unit: mm

- *1 The Standard orientation is **A**. B, C and D is also available on request
- *2 The flange hole can be threaded according to the flange type

Symbol Size(d)	JIS G 5527 (7.5K)							JIS G 5527 (10K)							L	A	B	Q	H	H1	H2	H3	H4	E1	E2	E3	F
	g	C	D	n	h	f	t	g	C	D	n	h	f	t													
500	572	639	706	4 8	M24 27	3	31	572	620	706	8 12	M24 27	3	31	600	590	300	350	1058	673	385	50	480	155	100	56	1182
600	676	743	810	8	M24 27	3	32	676	730	810	12	M30 33	3	32	700	688	340	400	1150	740	410	55	550	175	110	65	1292

■ Please include the following information when ordering

1. Nominal size
2. Quantity
3. Maximum operating pressure
4. Normal operating pressure
5. Media
6. Flange type
7. Mount orientation
8. Flow direction
9. Paint color instruction
10. Delivery request date
11. Other

Any information in this document is subject to change without notice.



Maezawa Industries, Inc.

5-11 Nakacho, Kawaguchi-city, Saitama 3328556 JAPAN

TEL: +8148-251-5511 FAX: +8148-251-9375

<http://www.maezawa.co.jp>

