

Aqua Tech

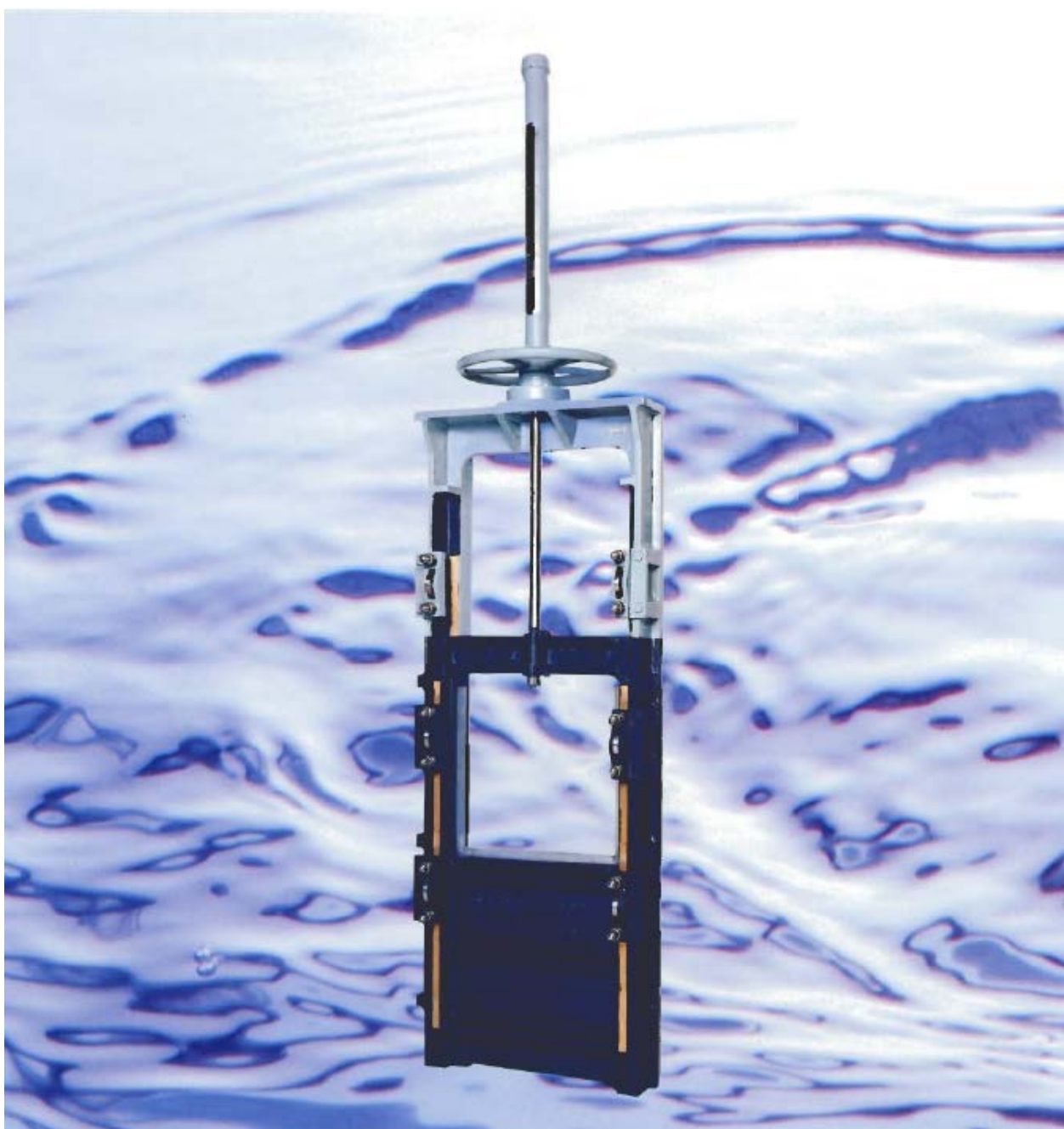


水のマイゼフ

No. 84e

Adjustable Weir

For reliable precise control of water level



Maezawa Industries, Inc.

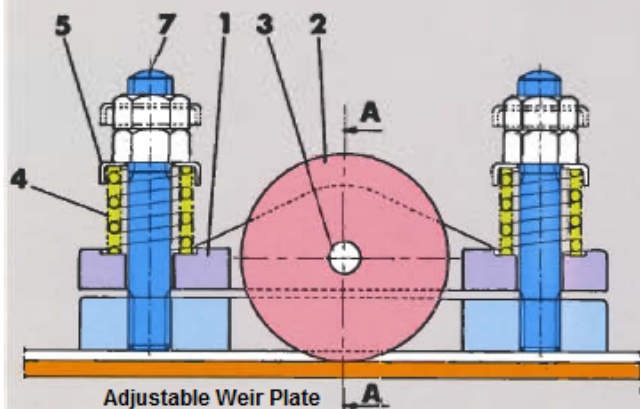
**MAEZAWA Weir offers
Bubble Tight Shut off
and
Smooth movements
with
Ease of Maintenance and Installation**

Choose the best option for your application

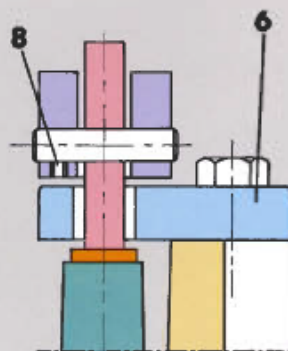
TIGHT SHUTOFF FEATURE The built-in fluid retention spring reinforces the water tight feature of Maezawa's Weir. It is adjustable and also effective for back pressure control.

RICH VARIETY OF OPTIONS A variety of optional parts optimize the weir best fit to any type of application

THE STRUCTURE OF FLUID RETENTION SPRING



CROSS SECTION A-A



The guide roller 2 is pressed against the weir door through attached roller box 1 to retain the pressure against fluid.

No.	Part name	Material	Q'ty
1	Roller box	FC200	1
2	Roller	SUS304	1
3	Stem	C36048E	1
4	Retention spring	SUS304	2
5	Spring bearing	SUS304	2
6	Plate	FC200	1
7	Stud bolt and nut	SUS304	2
8	Hex socket screw	SUS304	1

Suitable for wide range of level and flow control applications

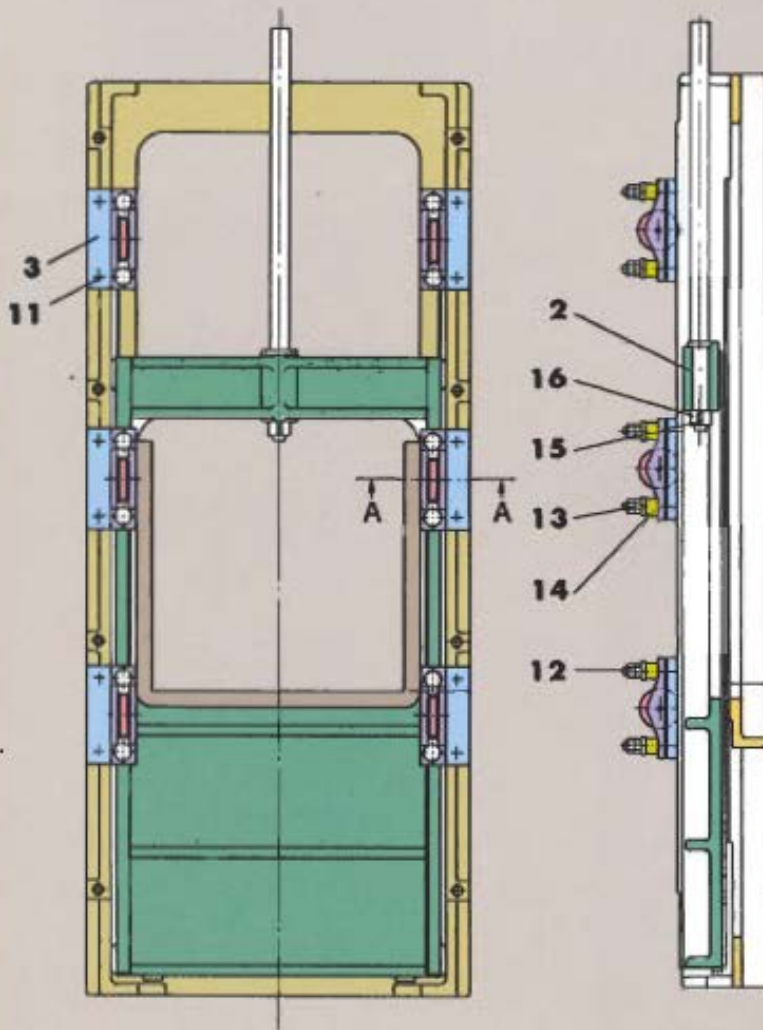
APPLICATIONS

Water purification plant, Sewage treatment plant, Irrigation water control and etc.

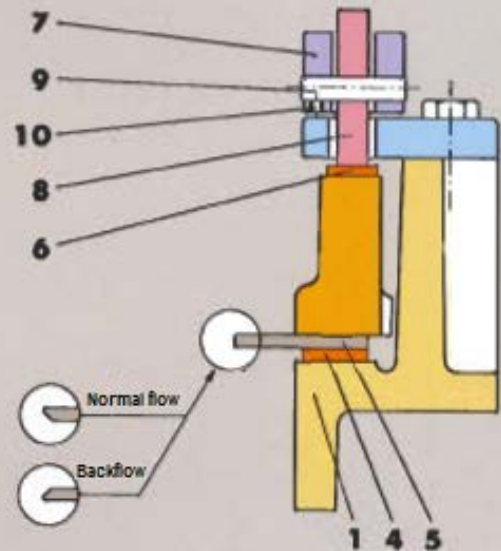
STANDARD SPECIFICATION

- | | | | |
|--------------------------------------|-------------|---------------------|-------------------|
| 1. Type | 2. Actuator | 3. Nominal size | 4. Flow direction |
| 1) Direct Actuator type | 1) Manual | See dimension table | 1) Normal flow |
| 2) Floor stand & Extension stem type | 2) Electric | | 2) Backflow |

STRUCTURAL DRAWING



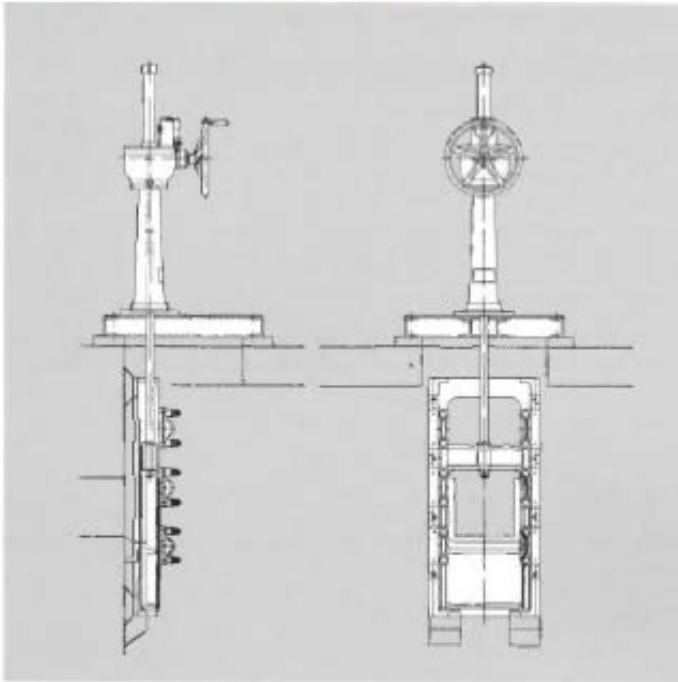
CROSS SECTION A-A



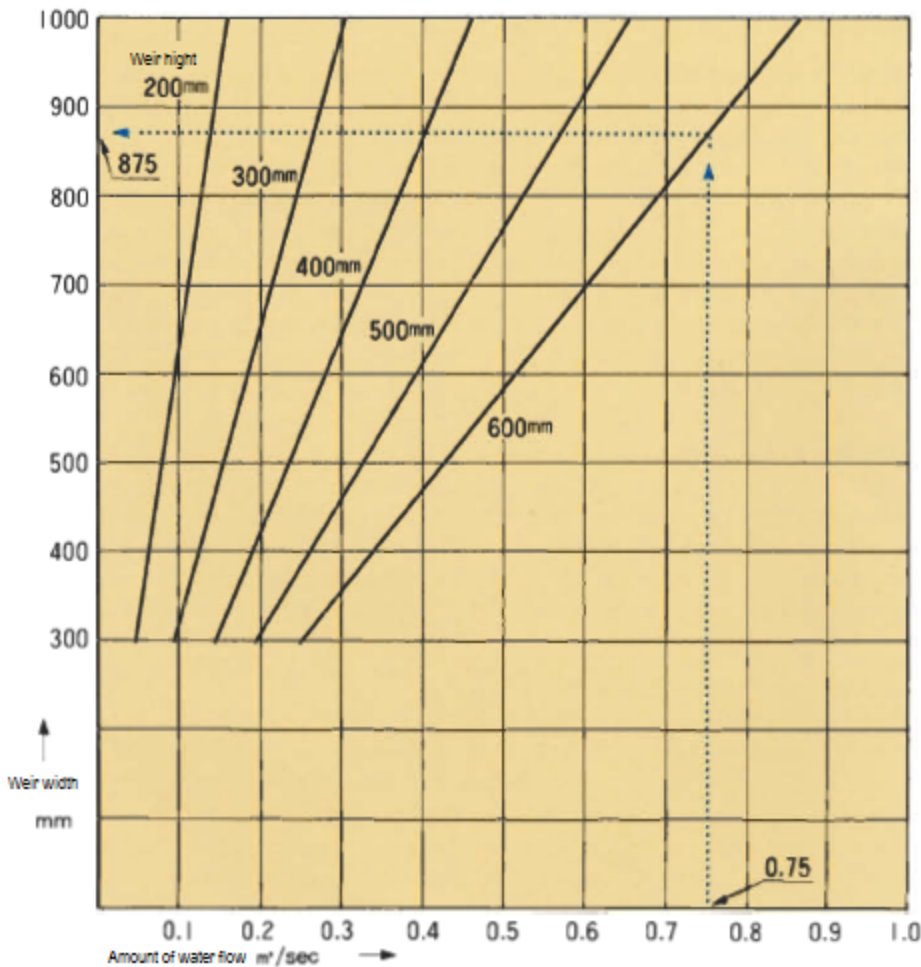
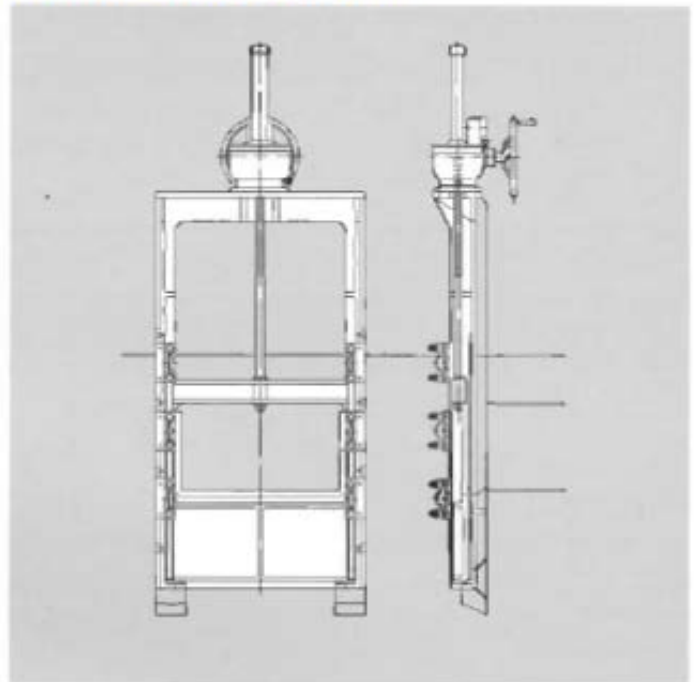
No.	Part name	Material	Q'ty
1	Guide flange	FC200	1
2	Weir door	FC200	1
3	Plate	FC200	6
4	Sealing strip	BC6	1 set
5	Sealing strip	SUS304	1 set
6	Plate	C3504BD	2
7	Roller box	FC200	6
8	Roller	SUS304	6
9	Stem	C36048E	6
10	Hex socket screw	SUS304	6
11	Hex bolt	SUS304	12
12	Stud bolt & nut	SUS304	12
13	Spring bearing	SUS304	12
14	Retention spring	SUS304	12
15	Locking nut	SUS403	1
16	Hex socket screw	SUS304	2

Variety of mount options for enhanced installation capabilities

E.g. Floor stand & Extension stem



E.g. Direct actuator mount



Weir size selection standard

Equation:
based on Francis formula

$$Q = 1.838BH^{3/2}$$

$$d > 3H$$

$$H > 150\text{mm}$$

Q : Amount of Flow m³/sec

B : Weir width m

H : Weir height m

d : Height from the bottom of the water to the top of the weir

(E.g.) Calculation procedure;

- 1) Maximum water flow 0.75m³/sec
- 2) Set the weir height to 600mm based on the engineering calculation
- 3) Read the weir height from the bar chart shown on the left : 875mm
- 4) The weir size is 900 x 600 mm

Weir Dimensions

Unit : mm

Nominal size B × H × st	H ₁	H ₂	H ₃	H ₄	H ₅	H ₆	B ₁	B ₂
300 × 200 × 200	920	310	610	110	550	260	510	560
300 × 300 × 300	1220	410	810	210	300	110	510	560
300 × 400 × 400	1520	510	1010	210	400	110	510	560
300 × 500 × 500	1820	610	1210	210	500	110	510	560
300 × 600 × 600	2120	710	1410	210	600	110	510	560
400 × 300 × 300	1220	410	810	210	300	110	610	660
400 × 400 × 400	1520	510	1010	210	400	110	610	660
400 × 500 × 500	1820	610	1210	210	500	110	610	660
400 × 600 × 600	2120	710	1410	210	600	110	610	660
500 × 300 × 300	1220	410	810	210	300	110	710	760
500 × 400 × 400	1520	510	1010	210	400	110	710	760
500 × 500 × 500	1820	610	1210	210	500	110	710	760
500 × 600 × 600	2120	710	1410	210	600	110	710	760
600 × 300 × 300	1220	410	810	210	300	110	810	860
600 × 400 × 400	1520	510	1010	210	400	110	810	860
600 × 500 × 500	1820	610	1210	210	500	110	810	860
600 × 600 × 600	2120	710	1410	210	600	110	810	860
700 × 300 × 300	1220	410	810	210	300	110	910	960
700 × 400 × 400	1520	510	1010	210	400	110	910	960
700 × 500 × 500	1820	610	1210	210	500	110	910	960
700 × 600 × 600	2120	710	1410	210	600	110	910	960
800 × 300 × 300	1240	410	830	210	300	130	1010	1060
800 × 400 × 400	1540	510	1030	210	400	130	1010	1060
800 × 500 × 500	1840	610	1230	210	500	130	1010	1060
800 × 600 × 600	2140	710	1430	210	600	130	1010	1060
900 × 300 × 300	1240	410	830	210	300	130	1110	1160
900 × 400 × 400	1540	510	1030	210	400	130	1110	1160
900 × 500 × 500	1840	610	1230	210	500	130	1110	1160
900 × 600 × 600	2140	710	1430	210	600	130	1110	1160
1000 × 300 × 300	1240	410	830	210	300	130	1210	1260
1000 × 400 × 400	1540	510	1030	210	400	130	1210	1260
1000 × 500 × 500	1840	610	1230	210	500	130	1210	1260
1000 × 600 × 600	2140	710	1430	210	600	130	1210	1260

DIMENSION

